

UDC 549:553.3(438)

LOW TEMPERATURE ORE MINERALS ASSOCIATIONS IN THE KUPFERSCHIEFER TYPE DEPOSIT, LUBIN–SIEROSZOWICE MINING DISTRICT, SW POLAND

A. Piestrzyński, J. Pieczonka

AGH-University of Science and Technology, Kraków, Poland
E-mail: piestrz@geol.agh.edu.pl

The low temperature ore minerals associations in the Kupferschiefer type deposit of Lubin–Sieroszowice mining district (south-western part of Poland) are described.

Key words: mineralogy, low temperature ore mineralization, Kupferschiefer type deposits, Poland.

The copper-silver deposit lies on SW corner of the Fore-Sudetic Monocline (fig. 1) and is located within the Permian sediments, which covered 56 % of the Polish territory. The southern border of deposit is a tectonic limit of Permian strata close to the tectonic border of the Fore-Sudetic Block. The other borders were documented following the contour set on last positive drill holes characterized with an accumulation index of 50 kg/m² and 0,7 % Cu as a cut of.

Kupferschiefer type copper deposit was discovered in 1957 in the Lubin ore district and mining started in 1968. The Lubin–Sieroszowice mining district is owned by the public mining company KGHM Polska Miedź S. A., since 2012 an international, that owned also some deposits and tenements in South and North America. During 50 years of mining operation, over one billion tons of ore grading 1,1–2,0 % of copper and 45–60 ppm of silver were extracted. The recent mining area is 400 km², but the geological deposit stretches over 1 000 km² of the Fore-Sudetic Monocline (see fig. 1). Although gold and PGM's were discovered by Kucha (1973), however an economic concentrations were first reported in 1994 during routine mineralogical sampling and described in [26]. Rote Fäule (RF) was described in the time of deposit documentation. The RF is recognized as synsedimentary and early diagenetic oxide facies controlled by fine dispersed hematite in the Kupferschiefer and Werra limestone strata [31]. The polymetallic, an economic ore mineral association is related to the geochemical redox barrier represented by the Kupferschiefer unit overlying the white sandstone strata. The secondary oxidation system (SOS), responsible for the second association of precious metals enrichment, was studied by Piestrzyński et al. [26]. SOS is younger in comparison to the RF [26].

Outline geology. The ore horizon is close to the Lower–Upper Permian strata composed of white sandstone (Weissliegend), boundary dolomite, the Kupferschiefer and dolomite (fig. 2). In the mining area, the average thickness of the Weissliegend sandstone is close to 18 m, however it is ranging from several up to 35 m. Copper content in the sandstone ore is ranging from 0,7 % in dispersed type of ores up to 30 % in massive type of ore, with an average thickness close to 1,8 m. In some places related to the elevations of the Weissliegend sandstone developed

during Zechstein sea transgression, nests and lenses anhydrite cemented sandstone are common. Anhydrite cemented sandstone is usually barren with minor pyrite, marcasite, galena, sphalerite and covellite. Close to the anhydrite cemented bodies massive chalcocite, covellite ores are present. Boundary dolomite (BD) is a next lithological unit containing ore mineralization. It is developed in the eastern part of the deposit as a continuous solid layer and in the western wing occurring only locally in a lensoidal forms.

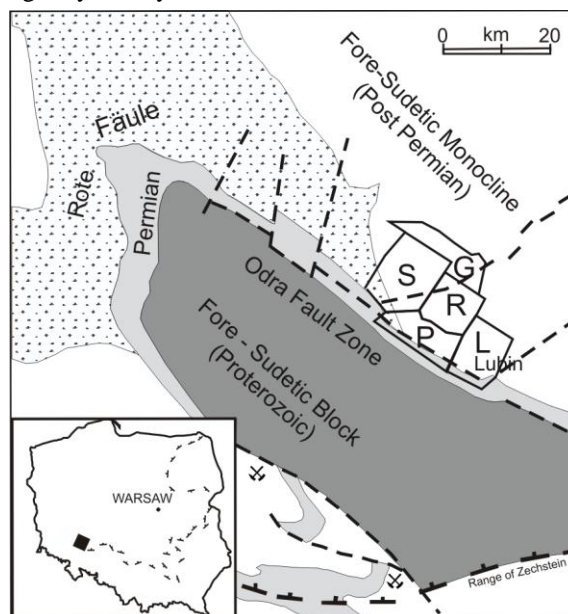


Fig. 1. Simplified map of the Lubin-Sierszowice IOCG deposit, SW Poland (without Cenozoic strata), after J. Pieczonka, A. Piestrzyński, 2011:

L – Lubin Mine, P – Polkowice Mine, R – Rudna Mine, S – Sierszowice Mine, G – Głogów Industrial field.

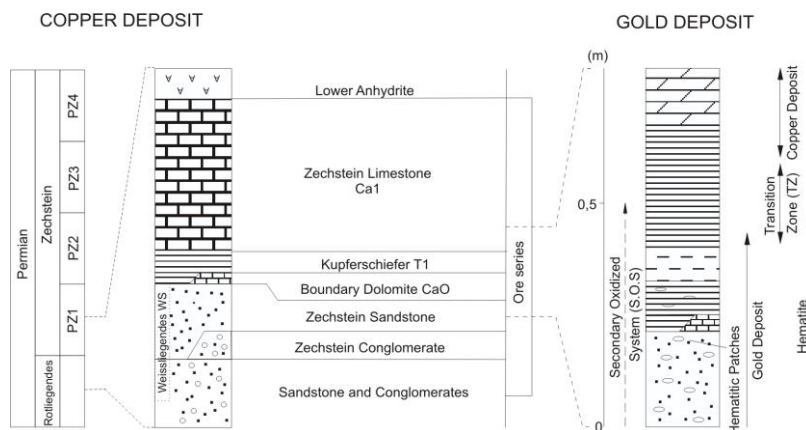


Fig. 2. Stratigraphic column of typical copper deposit (modified after [19])

and section containing gold ore (after [26]).

The Kupferschiefer (KS), that is follow the BD is typical metal-bearing shale, black in color, micro laminated sediment composed of illite, mixed-layer clays, dolomite, organic matter (7,34 %), sulphides, calcite, and minor phosphates, gypsum, anhydrite, and clastic materials e.g. quartz, feldspar, different types of mica and titanium oxides (fig. 3, 4). In this unit pitchy shale (clay-organic), clay-dolomite, dolomite-clay, and clay-calcareous varieties have been recognized. The KS thickness varies from 0 up to 0,7 m in the mining area with an average 0,27 m. An average content copper is close to 10 % however it's ranging from several up to 35 %. Some section of KS are oxidized and discolored to the maroon tint [26]. Carbonate type of ores (Zechsteinkalk – Z1, Ca1 – Werra) overly the KS are fine crystalline dolomite that is characterized with the high variability of its thickness ranging from zero up to several meters. Copper content in this ores is ranging from 0,7 % up to several percent.

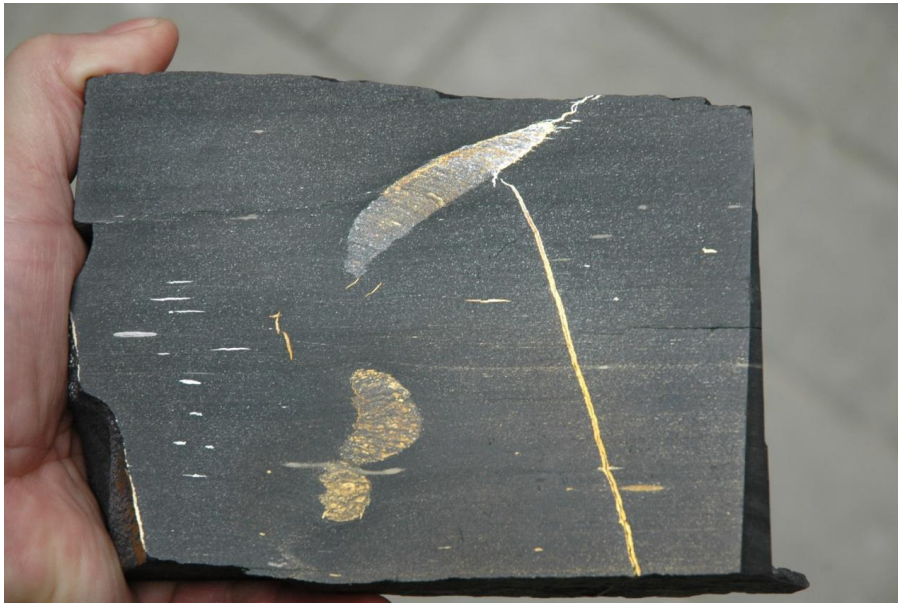


Fig. 3. Typical Kupferschiefer rich ore, Rudna Mine, 12 × 10 cm.

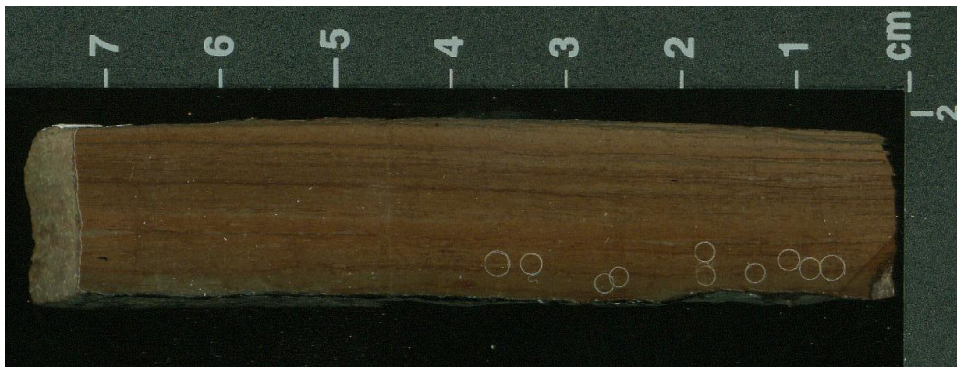


Fig. 4. Red variety of the Kupferschiefer containing fine grains of gold (in circles), Polkowice Mine.

Mineralogy. During 50 years of study following minerals have been distinguished: chalcocite, digenite, bornite, lilac bornite [(Cu,Ag)₃FeS₄] chalcopyrite, covellite, pyrite, marcasite, sphalerite, galena, tenorite, cuprite, native Ag and Cu, stromeyerite, stromeyerite Cu and tennantite, tetrahedrite, enargite, cobaltite, julukulite (Co,Ni)AsS, skutterudite (Co,Ni,Fe)As₃, smaltine (Co,Ni)As₃, bravoite (Fe,Ni,Co)S₂, vaesite NiS₂, rammelsbergite, parammelsbergite, nicollite, maucherite, safflorite, bietiechtinite [5]. In the next years: famatynite, chloantite, pitchblende, luzonite, jalpaite, argyrodite, siegenite (Co,Ni)₃S₄, castaingite CuMo₂S_{4,85}, djurleite, Co-löllingite, acanthite, clausenthalite and wittichenite, azurite, malachite, cerusite, smitsonite, annabergite, erythrite [7], electrum [8], morozewiczyt, polkowiczyt [6], mackinstryite Cu_{0,8}Ag_{1,2}S, kongsbergite AgHg and tiemannite [28], gersdorffite [9], thucholite [1], brannerite [15], anilite [10], molybdenite, jordisite [29], villamaninite [18], half-bornite, quarter-bornite [30], mooihoeite, haycockite [11], native Pb, Pt-gold, Pb-gold, native Pd, sobolevskite, vincentite, eugenite Ag₁₁Hg₂, kolymite Cu₇Hg₆ [13], uraninite [21], chlorargyrite and platnerite [14], tetraauricupride, spionkopite and yarrowite [24], native Bi, bismuthinite, pavonite [17], carrolite, lautite and linneite [17].

Based on microprobe and EDS analyses next tens of new chemical phases have been detected: Pb₅As₄, Cu₂₁PbS₁₆, CuMoS₃, Pd₅As₂, PdAs₂, Pd₃As₂, Cu₆FeS₅, Cu₉MoS₉, Cu₈MoS₉, Ag₇Hg₂, Ag₁₀Hg₂; Cu₄Ag₂S₃, Cu(Fe,Ag)S₂, (Fe,Cu)Cu₂(Ag,Cu)₃S₄, FeCu₃Ag₆S₇, Cu_{5,28}Fe_{0,55}Ag_{1,17}S₄, FeCu(Ag,Cu)₂S₅, FeCu₂Ag₃S₄; Pd₃As₅, (Ni,Pd)₃As₄, Pd₄As₃, PdCu(As,S)₆, Pd₈As₂S, Pd₈As₆S₃ [12]; Cu₆Ag₂S₅ [28]; (Cu,Fe)₂₂PbS₁₄, Pb-castaingite, K-castaingite [14]; Ag₁₄Hg₁, Ag₆Hg₁ [25]; Pd₂AsO₄, PbBi, (Cu,Pb,Fe,K)₂(Mo,As)₆S₈, Pb₄Hg, (Cu,Fe)₄Bi₂S₇, Cu₇Bi₂S₇, Cu₄BiS₄ [17]; PdAs₇, Pd₂As, Pd₄As, Pd₉As₂, Pd₅As, Me₁₃As₂ (Me – Pd, Pt, Au, Ag); Me₈As₃ (Me – Pd, Ag and Pt); Pd(Ni,Fe)₂As_{3,5}S_{0,5} or Me₄As₇S, (Pd,Pt,Ni)As₇, (Pd,Ni)As₇, (Pd,Au,Ni)₃As and PdAs₃ [20].

In atomic proportions showed following new faces like: Me₃Se₂(Te,As)₁, Me₂(Se,Te)₁, Me₅Se₄(Te,As)₁, Me₂(Se,Te,As)₁, Me₃(Se,Te,As)₂, where Me – (Ag + Au + Pb + Bi); Pd_{9,1588}Pt_{1,1020}(Au_{2,2148}Ag_{0,5694})As_{2,0000}, (11,70 % Pt) [20]; naumannite, characterized by instable chemical composition [20], Au-naumannite, Au-Pb-naumannite, Pb-naumannite, Au-Rh-naumannite, Au-clausenthalite, Au-Ag-clausenthalite and phase with composition of AgSe₂ [20, 26]; montroseite VO(OH), roscoelite KV₂[AlSi₃O₁₀(OH)₂] [2].

In general two ore mineral association and thirteen paragenetic groups were described [22], however the deposit was developed in five stages [26]. The first two stages are related to the sedimentation and early digenesis of the Zechstein strata; accumulation of base metals was on the level of *n0–n00* ppm. The last stage is related to the secondary oxidation system that was responsible for Cu deposit oxidation and precipitation of a noble metal association [20, 26].

The first association is composed of an economic accumulation of polymetallic minerals. The second association contains a great number of noble metals association accompanied with some not fully identified Se, Te, Hg, Bi phases, which are probably a new minerals. Total in the deposit over 140 minerals have been recognized. Both association and all described above minerals were precipitated in low temperature. The upper limit of temperature is restricted to the two factors, the upper limit of low-chalcocite stability ($103,5 \pm 1,5$ °C [27]) and reflectivity of vitrinite. Chalcocite and vitrinite are major components of ores. Existing geochemical environments are confirmed by presence of low temperature phases like thiosulphates which are common metastable minerals (fig. 5–7).

Copper minerals occur in dispersions (fig. 8), nests (fig. 9) and veinlets.

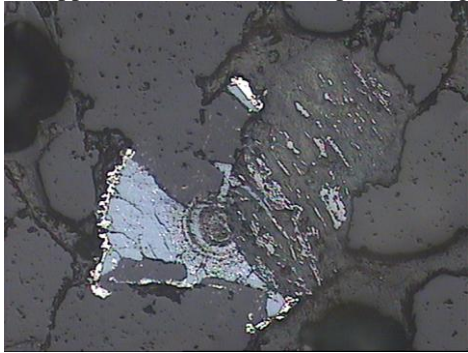


Fig. 5. Botroidal structures of thiosulphates – digenite with pyrite rim, Rudna Mine. Reflected light, × 600.

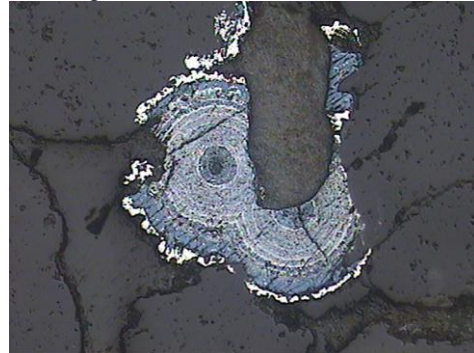


Fig. 6. Botroidal structures of thiosulphates – covellite with pyrite rim, Rudna Mine. Reflected light, × 600.

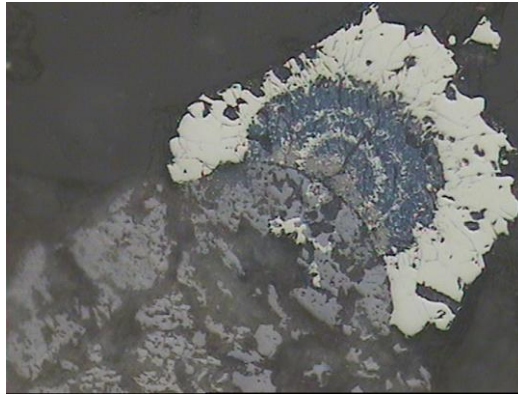


Fig. 7. Botroidal structures of thiosulphates – covellite with pyrite rim, Rudna Mine. Reflected light, × 600.

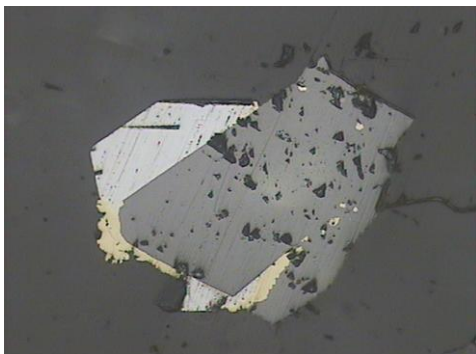


Fig 8. Chalcocite framboides in carbonate matrix, Rudna Mine. Reflected light, × 1 200.



Fig. 9. Low temperature intergrowth of sphalerite (grey) with galena (white) and chalcopyrite in dolomite sparite, Rudna Mine.

Reflected light, $\times 600$.

There is a long list of evidences of pseudomorphs and replacement (fig. 10) represented by different paragenetic groups and mineral association. These minerals contain sulphur on different stages of oxidation at the same phase [16].

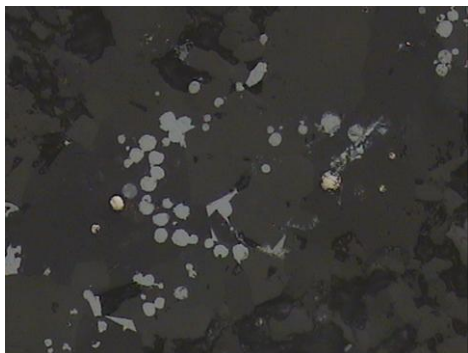


Fig. 10. Chalcocite pseudomorph after foraminifera skeleton, Rudna Mine. Reflected light, $\times 1\ 200$.

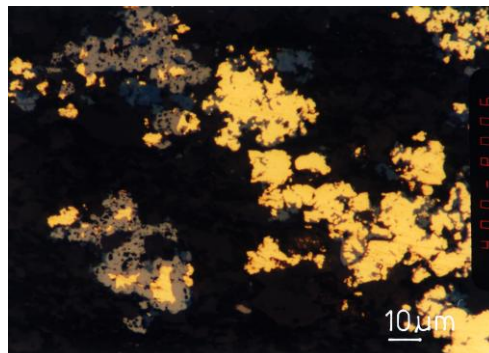


Fig. 11. Gold-hematite intergrowth (blue – covellite), Polkowice Mine. Reflected light.

Gold (fig. 11) and others noble metal alloys are a major phases accompanied by the secondary, coarse grain hematite and minor tellurides, selenides and arsenides [20].

The project was supported by the AGH grant No 11.140.562.

REFERENCES

1. Banaś M. Thucholite from the Permian copper-bearing rocks in Poland / M. Banaś, J. Jarosz, W. Salamon // *Mineral. Polon.* – 1978. – Vol. 9, N 2. – P. 3–22.
2. Banaś M. The association of Uranium, Vanadium and organic matter in the Copper deposits in Weissliegend sandstones (Fore-Sudetic Monocline, Poland) / M. Banaś, B. Kwiecińska, E. Starnawska // *Mineral. Polon.* – 2005. – Vol. 36, N 2. – P. 145–160.
3. Geochemical characteristics of organic matter and its relation to ore mineralization in Kupferschiefer, Lubin–Sieroszowice deposit, SW Poland / D. Więclaw, J. Pieczonka, M. J. Kotarba, A. Piestrzyński // *Digging Deeper : Proceed. of the 9th Biennial SGA Meeting.* – Dublin, 2007. – P. 225–228.
4. Geochemistry of host-rocks from the secondary oxidized zones / J. Pieczonka, A. Piestrzyński, M. Kotarba, D. Więclaw // *Annales Societas Geologorum Poloniae.* – 2008. – Vol. 78, N 3. – P. 180–195.
5. Harańczyk C. Minerale arsenowe lubińskiego złoża miedzi / C. Harańczyk // *Rudy i Met. Niezel.* – 1967. – N 1. – S. 613–621.
6. Harańczyk C. Morozewicyt and polkowicyt – typochemical minerals of the Fore-Sudetic Monocline / C. Harańczyk // *Rudy i Met. Niezel.* – 1975. – N 6. – S. 288–293 (in Polish).
7. Harańczyk Cz. Ore mineralization of the uxenic Lower Zechstein sediments, Fore-Sudetic Monocline / Cz. Harańczyk // *Archiwum Mineralogiczne.* – 1972. – Vol. 30, N 1–2. – S. 13–144 (in Polish).

8. Kucha H. Organiczne związki złota w łupku miedzionośnym z monokliny przedsudeckiej / H. Kucha // *Rudy i Met. Niezel.* – 1973. – N 6. – S. 302–303.
9. Kucha H. Organic matter, Au, Ni and Co in Zechstein sediments of the Fore-Sudetic Monocline / H. Kucha // *Rocznik PTG.* – 1976. – T. 46, N 3. – S. 369–417 (in Polish).
10. Kucha H. Anilite, Cu_7S_4 from Lubin mine, Lower Silesia, Poland / H. Kucha // *Mineral. Polon.* – 1979. – N 10. – P. 89–93.
11. Kucha H. Platinum-group metals in the Zechstein copper deposits / H. Kucha // *Poland Econ. Geol.* – 1982. – Vol. 77. – P. 1578–1591.
12. Kucha H. Palladium minerals in the Zechstein copper deposits in Poland / H. Kucha // *Chemie Erde.* – 1984. – Vol. 43. – P. 27–43.
13. Kucha H. Eugenite, $\text{Ag}_{11}\text{Hg}_2$ – a new mineral from Zechstein copper deposits in Poland / H. Kucha // *Mineral. Polon.* – 1986. – Vol. 17, N 2. – P. 3–12.
14. Kucha H. Geochemistry of the Kupferschiefer, Poland / H. Kucha // *Geologische Rundschau.* – 1990. – Bd. 79, N 2. – S. 387–399.
15. Kucha H. Noble metals associated with organic matter, Kupferschiefer, Poland / H. Kucha // *Bitumens in ore deposits* : [J. Parnell, H. Kucha and P. Landais (eds.)] : [Special Publ. of the Society for Geology Applied to Mineral Deposits. – 1993. – Vol. 9]. – P. 153–170.
16. Kucha H. The role of thiosulphates in the accumulation of sulphur and metals in Kupferschiefer, Poland / H. Kucha, A. Piestrzyński // *Source, Transport and Deposition of Metals.* – Pagel and Leroy, 1991. – P. 197–200.
17. Kucha H. Carrolite (CuCo_2S_4) and lautite (CuAsS) from Kupferschiefer, Poland – the first occurrence / H. Kucha, W. Salamon // *Mineral. Polon.* – 1998. – Vol. 29, N 1. – P. 3–9.
18. Moh G. H. Villamaninite / G. H. Moh, H. Kucha // *N. Jb. Miner. Abh.* – 1980. – Bd. 139. – S. 134–136.
19. Oszczepalski S. Origin of the Kupferschiefer polymetallic mineralization in Poland / S. Oszczepalski // *Mineral. Deposita.* – 1999. – N 34. – P. 599–613.
20. Pieczonka J. Mineralogy and geochemistry of ore minerals from secondary oxidized zones / J. Pieczonka, A. Piestrzyński // *Annales Societas Geologorum Poloniale.* – 2008. – Vol. 78, N 3. – P. 195–241.
21. Piestrzyński A. Uranium and thorium in the Lubin polymetallic ore deposits, Fore-Sudetic Monocline, SW Poland / A. Piestrzyński // *Mineral. Polon.* – 1988. – Vol. 20, N 1. – P. 41–57.
22. Piestrzyński A. Okruszcowanie : [Piestrzyński A. (ed.)]. – Monografia KGHM Polska Miedź SA, 2007. – S. 282–237.
23. Piestrzyński A. Ore minerals : [Piestrzyński A. (ed.)]. – Monografia KGHM Polska Miedź S.A, 2008. – P. 167–197 (in Polish).
24. Piestrzyński A. Tetraauricupride from the Kupferschiefer type deposit, SW Poland – first occurrence / A. Piestrzyński, J. Pieczonka // *Mineral. Polon.* – 1998. – Vol. 29, N 1. – P. 11–18.
25. Piestrzyński A. Silver amalgams from the Sieroszowice copper mine, Lubin–Sieroszowice district, SW Poland / A. Piestrzyński, W. Tylka // *Mineral. Polon.* – 1992. – Vol. 23, N 1. – P. 17–27.
26. Piestrzyński A. Red bed-type gold mineralization, Kupferschiefer, south-west Poland / A. Piestrzyński, J. Pieczonka, A. Głuszek // *Mineral. Deposita.* – 2002. – N 37. – P. 512–528.

27. Roseboom E. H. An investigation of the system Cu–S and some natural copper sulphides between 25 and 700 °C / E. H. Roseboom // Econ. Geol. – 1966. – N 61. – P. 641–672.
28. Salamon W. Noble metals in Zechstein black shale in Fore-Sudetic Monocline / W. Salamon // Rudy i Met. Nieżel. – 1976. – N 12. – P. 472–477 (in Polish).
29. Salamon W. Ag and Mo in the Zechstein sediments of the Fore-Sudetic Monocline / W. Salamon // Prace Mineralogiczne PAN. – 1979. – N 62. – 56 p. (in Polish).
30. The replacement of rutile by chalcocite in the Zechstein copper ores of the Fore-Sudetic Monocline / H. Kucha, W. Mayer, A. Piestrzyński, A. Wieczorek // Mineral. Polon. – 1981. – Vol. 12, N 1. – P. 69–74.
31. Wodzicki A. An ore genetic model for the Lubin–Siroszowice mining district, Poland / A. Wodzicki, A. Piestrzyński // Mineral. Deposita. – 1994. – N 29. – P. 30–43.

*Стаття: надійшла до редакції 11.05.2012
прийнята до друку 29.05.2012*

АСОЦІАЦІЇ НИЗЬКОТЕМПЕРАТУРНИХ РУДНИХ МІНЕРАЛІВ НА РОДОВИЩІ ТИПУ КУПФЕРШІФЕР, РУДНИЙ РАЙОН ЛЮБІН–СЕРОШОВИЦЕ, ПІВДЕННО-ЗАХІДНА ПОЛЬЩА

А. Пестшиньські, Я. Печонка

*Університет науки і технології, м. Краків, Польща
E-mail: piestrz@geol.agh.edu.pl*

Описано низькотемпературні асоціації рудних мінералів на родовищі типу Купфершіфер рудного району Любін–Серошовице (південно-західна частина Польщі).

Ключові слова: мінералогія, низькотемпературна рудна мінералізація, родовища типу Купфершіфер, Польща.

АССОЦИАЦИИ НИЗКОТЕМПЕРАТУРНЫХ РУДНЫХ МИНЕРАЛОВ НА МЕСТОРОЖДЕНИИ ТИПА КУПФЕРШИФЕР, РУДНЫЙ РАЙОН ЛЮБИН–СЕРОШОВИЦЕ, ЮГО-ЗАПАДНАЯ ПОЛЬША

А. Пестшиньски, Я. Печонка

*Університет науки і технології, г. Краків, Польща
E-mail: piestrz@geol.agh.edu.pl*

Описаны низкотемпературные ассоциации рудных минералов на месторождении типа Купфершифер рудного района Любін–Серошовице (юго-западная часть Польши).

Ключевые слова: мінералогія, низькотемпературна рудна мінералізація, месторождения типа Купфершифер, Польща.