

551.4

, 41, 79000, .  
e-mail: g\_bajrak@ukr.net

60-80-

VIII-

30-

I .

” [11].





... [16].

... [20].

1957–1962

IX–X

... 9 %

... – 5 %, ... – 2, ... – 1 % [17].

“ ” ( “ ”, ... );

“ ” ( ... “ – ” – ... ( ) [16].

– V

), ... ( –

310 , ... – 295 , ... – 327 .

( – .)

[9].

– ... ( ... ), ... ( ... ),

( – ... ), ... [18].





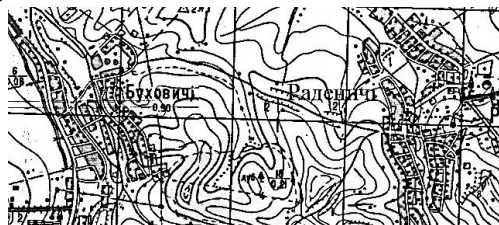
1944–1946 . . . -2  
1947 . . . -2  
1950 . . .  
60–80- . . .  
( . 1). . . . 50- . . .



1889



1932



1989

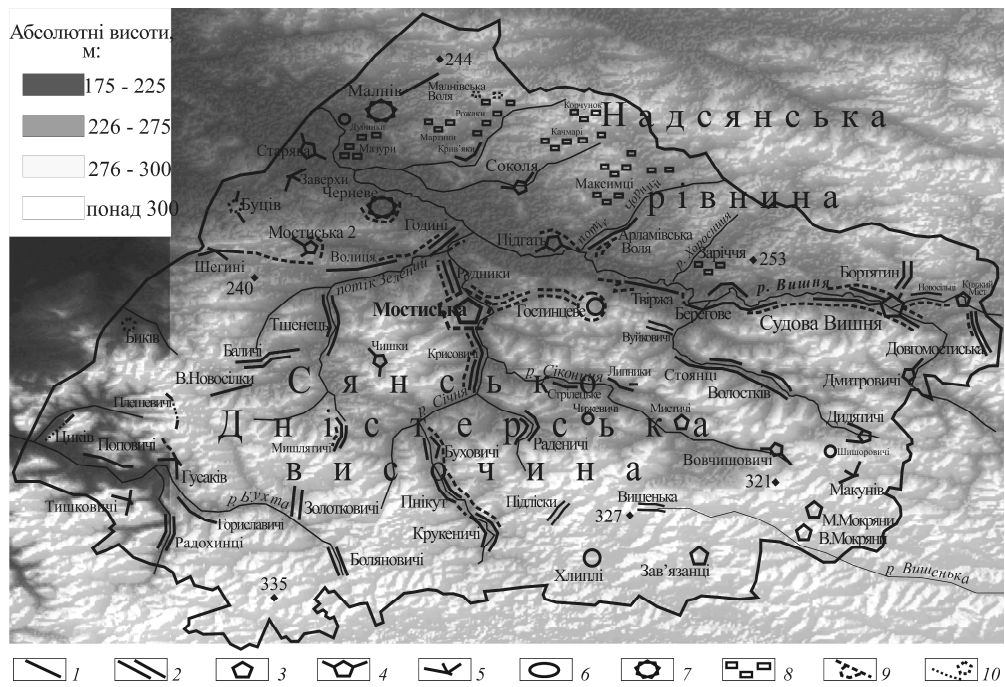
1. ( )





[1].

( .2).



.2.

3 - ; 4 - ; 5 - ;  
 6 - ; 7 - ; 8 - ;  
 9 - ; 10 - ;





.3.

( . . .3);

( . . .3).

( 10 ),

V

( - ( ), ( ) ),

( - ( ), ( ) ).

( ( ) )

-2 ( ( ) ), ( ), ( ),

1244 ..

1404 .

[17].



.4.

: 1)

(

)–

1–3°.

; 2)

4–5°.

251 .

; 3)

8–10°.

; 4)

( .4).

“ ”, – V . 2,5 ( . .5, ).

[18].

( )

( . .5, ).



1. . . . : / . . . . - : . . . . , 2007. - 296 .
2. . . . / . . . . [ . . . . ] - : www.gap-varpanyan-v.narod.ru
3. . . . // . . . . - 2013. - . 41. - . 99-108. /
4. . . . // . . . . - 2013. - . 42. - . 106-111. /
5. . . . // . . . . - 2006. - . 33. - . 86-92. /
6. . . . / . . . . // . . . . - . 2001. - . 28. - . 93-97. /
7. . . . ( . . . . ) / . . . . - // . . . . - 2008. - . 5 (2). - . 212-216. /
8. . . . , 2002. - 47 . / . . . . - : . . . . /
9. . . . // . . . . - : . . . . - 2007. - . 8. - . 505-509. /
10. . . . - / . . . . // . . . . - 2010. - . 616. . - . 81-84. /
11. . . . / . . . . - : . . . . , 1979. - 122 . /
12. . . . : 11.00.02 / . . . . - : . . . . , 2006. - 442 . /
13. . . . / . . . . // . . . . - " " - , 2005. - . 36. - [ . . . . ] - : www.ji.lviv.ua/n36texts/lozynskyj.htm.
14. . . . - : . . . . : 18.00.01 / " " - , 2008. - 25 . /
15. . . . / [ . . . . ] - : . . . . - , 1972. - 151 . /
16. . . . / . . . . - , 2008. - 65 . /
17. . . . / . . . . - , 2008. - 44 . /
18. . . . - / . . . . - , 2005. - 110 . /

19. <http://maps.vlasenko.net>
20. [www.castles.com.ua](http://www.castles.com.ua)
21. [www.uk.wikipedia.org/wiki/](http://www.uk.wikipedia.org/wiki/)

:  
27.03.2014  
14.05.2014  
25.06.2014

## GEOMORPHOLOGICAL FACTORS OF DEVELOPMENT AND PLACEMENT OF SETTLEMENTS OF MOSTISKY DISTRICT OF LVIV REGION

**Galyna Bayrak**

*Ivan Franko National University of Lviv,  
P. Doroshenko Str., 41, UA – 79000 Lviv, Ukraine,  
e-mail: g\_bajrak@ukr.net*

Historical features of development of settlements of Mostisky district of Lviv region of Ukraine and influence on their formation of geomorphological conditions of terrain are analyzed. Geomorphological factors of placement of settlements were important at the first historical stages of building of terrain in the Middle Ages. The first settlements were concentrated at lower elevations along the valleys. With the expansion of the network of fortified castles, which were built on the hills, rural development held in conjunction with the middle part of the hills. On the low-lying areas are built local elevated areas in the marshes, where people were hiding from enemy Tatar raids. In VIII– centuries rural building expands again along the valleys, and built palaces and manors were located on the upper parts of the slopes. The new wave of increasing settlements refers to 30<sup>th</sup> years of the XX<sup>th</sup> century, the building blocks occupy the middle of the slope of the valleys and the upper beams. In 60–80<sup>th</sup> years of the XX<sup>th</sup> century is compacted blocks within settlements, as well as expansion of their neighbourhoods along the rivers and roads, rural industries in conjunction with a top of the slope. Modern building of the beginning of the XXI<sup>st</sup> century is mainly developed in the middle and upper portions of the slopes.

The influence of relief on the modern structure of settlements and the prevailing relief situation of cities and villages of the district are defined in article. Eight types of relief situations of settlements of Mostisky district are identified: the series-line lower-slope, linear lower-slope, compact mid-slope, compact-branched mid-slope, branched mid-slope, circular mid-slope, sectional plains and compact plains. The series-line lower-slope is the prevailing form of settlement with respect to relief on a hill part of area, and in the lowlands – sectional plains.

*Key words:* development of settlements, structure of settlements, a relief situation.