

910.2:551.4/.8 (477)

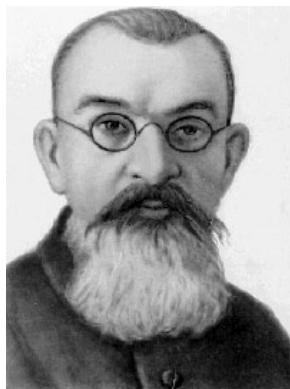
, 41, . . . , 79000,
-mail: prostolena.87@mail.ru

70 %

[3, 4, 7, 10, 18, 22].

. [1, . 6–

7].

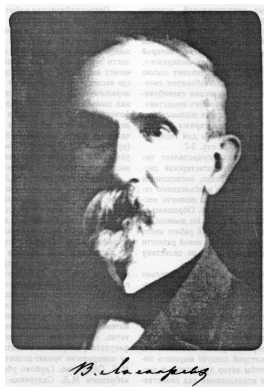


(1858–1930)

(1858–1930).

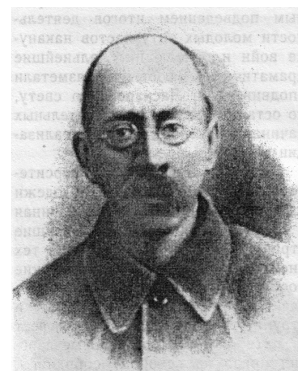
[8, . 428–429, 444–445].

(1868–1954) 1914 . [9],



(1868–1954)

[8, . 362–380].



(1874–1920),

1912–1913

(1874–1920)



(1889–1936)

(1889–1936)

[8, . 442].

(1891–1937)

–)

V -6

V -6 1927 1929 . [5].

20–30-

29, 31].

[11, 12, 14–16, 24, 27–

1929 .

(,)

1930 ..



(1892–1975)



(1890–1982)

[6, .22].

70 %

1920–30-

” [14, .3].

” [14, .10–

11].

*

VI

[10].

” (- “ , 13–16 2009 .)

...
 24 1926 ..
 .“ , 316 (.- . .),
 , SOO (- .- . .)
 “ ”, () .
 ”.
 , ()
),
 20-30- .
 : 9 1925 .
 .“

[14, .2].

[14, .4].

„

1929

(L₃)

Würm

Würm

L₅

(Würm),

(“ ”)

L;

(“ W ”),

[14, .4-5].

Soergel-a

Soergel-a

Penck-a. Soergel
: Günz = , Mindel = , Riss = , Würm = V” [14, . 5].

Würm , a, b, c. , V a

Würm , , “ , ”, V b

V - V b , b, , , b, . .

(Riss-Würm),

(

3 [14,

. 3].

: “

” [14, . 122]. [33, 34], - [23],

(

(

: - , 4 , ;

(V b);

V a). (-

; : (-

); (-

[14, . 5-6].

Riss Mindel.

“ ... ”
 Riss- ?
 1,5 ...

V a, V b [14, . 6].

- a) ;
- b) ;
- c) ;
- d) ;
- e) “ ” () ;
- f) (, ,) .

“ ” “ ” “ ”
 “ ” () [14, . 120–122].

- [14, . 89]:
- a) ;
 - b) 10–15 ;

c) ; -

d) *d,* , . , , . -

, *b,* . , . -

, , , , -

, , , -

. . *b.* -

, , , , -

, , , , -

d , , -

, , , -

. . , , -

101–106, 109–114]: () [14, . 88–93,

- , ; -

- ; -

- ; -

- ; -

- ; -

- ; -

- ; -

- ; -

- ; -

- ; -

- ; -

- ; -

- ; -

- ; -

1. ...

2. ... ()

3. ...

4. ...

5. ...

[14, . 122–123].

6 1927 ... :“

()”.

(1927)



(1870–1932)

(1929)

[15].

[14, . 123].

[14, . 124].

[14, . 131].

:“... ”

(),

[14, . 131–134].

[17].

[32],

[30].

in situ

().

[14, . 124–125].

in situ,

[14, . 88–93].

[14, . 104].

[13; 14, . 10–69; 24–27].

, in situ,

[14, . 113–114].

Larix sp. Picea excelsa [14, . 127].

, *Pupilla muscorum Succinea oblonga*.

Martha instabilis, *Martha cereoflava podolica* *Monarcha rubiginosa*.
Vallonia tenuilabris, *Columella edentula columella* *Vertigo parcedenlata* [14, . 127–128].

1. , , . , ,
2. , .
- (3.) . , , -
4. - . , -
5. , . , , -
- , (, -) , . -
- . , “ ”
- [14, . 127–130]. -
- , , , -
- () ; -
- , - , -
- (-
-) , ,
- : “ -
- , -
- ” [14, . 130]. -
- , , -
- , ,

(), (,)

[14, . 112-113].

().

[14, . 116].

- 2,5-2,0 (.).

[14, . 117].

” [14, . 118].

(

) “ , ” . , ; , , , . (, ’)

30- - *

[22, tab. 36–39]

[7, .31], [2, .24], [3, .57; 4; 18, .49, .14], [22, tab. 36–39]

[18, .42–43, .13; .49, .14]

[22, tab. 36–39]. – [20, .34].

!). , , – – –

[3, .57; 4; 18, .42–43, .13; .49, .14; 22, s. 317, tab. 36–39].

28. Polanskyj G. Staroaluwjalny taras Polesia i jego stanowisko w historii zatorflenia // Odbitka z wydawnictwa: Post p prac przy Meljoracji Polesia (Sprawozdanie za lata 1931–1932). Brze nad Bugiem, 1933. S. 1–10.
29. Polanskyj G. Stratygrafja dyluwjum i tarasy centralnego Polesia // Odbitka z wydawnictwa: Post p prac przy Meljoracji Polesia (Sprawozdanie za lata 1931–1932). Brze nad Bugiem, 1933. S. 11–16.
30. Polanskyj G. Rekonstruktion der geographischen Verhältnisse des Jungpaläolithikums der podolisch-bessarabischen Provinz // „...”, 1936. . 1. . 3–23.
31. Polanskyj G., Krukowski S. Die erste Paläolithstation in Nowosilka-Kostiukowa (Podolien) // 1926. . 25. 23 . (Separatabdruck).
32. Rogala W. Über die Stratigraphi der Kreidebildungen von Podolien // Kosmos. Lemberg, 1909. Bd. XXXIV.
33. Soergel W. Loesse, Eiszeiten und Paläolithische Kulturen. Jena, 1919.
34. Soergel W. Die Gliederung des Eiszeitalters. Jena, 1924.

**EXPLORATION OF LOESSES IN VOLYN–PODILLIA REGION
AS A CORNERSTONE OF YURIY POLIANS’KYI’S SCIENTIFIC QUESTS**

O. Tomeniuk

*Ivan Franko National University of Lviv
P. Doroshenko St., 41, UA – 79000 Lviv, Ukraine,
e-mail: prostolena.87@mail.ru*

On the basis of the detailed analysis of scientific works, written by Yuriy Polians’kyi, the main scientific achievements of the scholar are characterized. These works are concerning researches of loess-soil stratum on the Middle Dniester region. In particular, progressive technique of researches of Quaternary deposits and using of the newest terminology are considered. Yuriy Polianskyi’s major scientific ideas are analyzed: loess and terraces, loess and glaciations, loess and Paleolithic, stratigraphic significance of fossil soils in loess-soil stratum etc.

The influence of scientific achievements of Yuriy Polians’kyi at the field of loess problematic on the development of modern palaeogeographic researches of loess of Ukraine is analyzed.

Key words: loess, terraces, fossil soils, glaciations, Pleistocene, Paleolithic, Dniester, Volyn-Podillia region.

, 41, . , 79000,
-mail: prostolena.87@mail.ru

10.04.2011
19.04.2011