

., . . . , . . . , . . . , . . . , . . . , . . . -

, . . . , . . . , -

, . . . , -

. -

. 18 (1990-2008).

. 1990-2004 . -

567,3 (1990) 181,2 . (2004). 2004 . -

266,8 . 2008 . -

1990-2000 . -

. 271,9 108,6 . (60 %) -

2004 . (2004 89,9 . , -

(40,6 %) 1990 2008 .). 2005-2008 . -

(2008 .- 126,4 .). -

, - , - , -

, 1990-2008 . -

50 % (1990 . 98,5 , 2008 .- 49,5), -

- 12,5 1990 . 5,8 2008 . -

), - (1151,4 -

(1,7) - (0,1), (1,0), -

(1,9) [8]. -

, - 48,7 %, ' - 24,3, -

- 17,1 %. -

" " " " " " " " " " " " : -

" " " " " " " " " " " " " " " " " -

4 . " " " " " " " " " " " " " " -

" " " " " " " " " " " " " " " " -

" " " " " " " " " " " " " " " " [1]. -

1990-2000 . (3,5) -

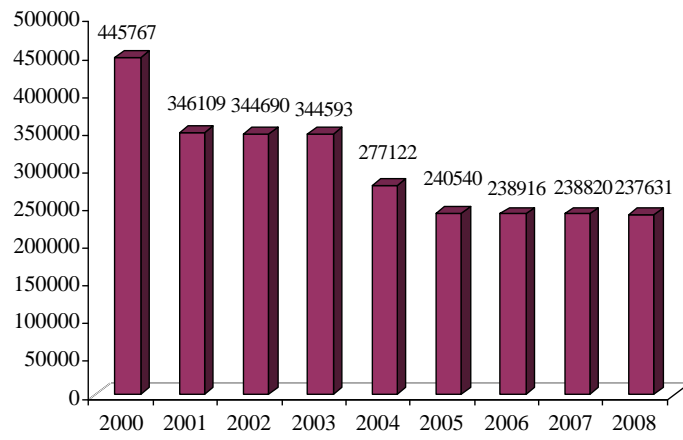
(295,4 . 1990 . 84,3 . -

2000 .), 2000-2008 .

134,5 . .

2008		(45,6)		(5,8)	-
(5,5),	(5,4)	(4,5)		-	-
(1,9),	(2,2),	(2,2)		-	-
(0,4),	(1,3),	(1,5)	(1,7)		-
140,4				2008	-
		(104,2)		(16,2),	-
		(15,8),	(1,6)	(2,1),	-
(0,4)					-
2008		15 979	3 671		-
			14,8 % (2007	- 24,7 %,	-
2006 - 26,5,	2005 - 17,2 %).				-
(45,6 %		(19,4),	(24,3);		-
(28,6),	(23,0),	(19,6),	(19,0)		-
	(14,6 %) [12].				-
	60,0	2008	253,8		-
	74		114		-
139	2 253			439	-
	(19,4 %).				-
(44,8 %		(44,6),	(38,1),	37,2	-
33,8 %).	20	139	(14,4 %)		-
				1 15.	-
					-
					-
			2008		-
	(12,1 %),	(33,3),	(8,8),		-
(23,8),	(13,1),	(16,1)	(13,95 %)		-
	(29,4 %)	(34,6 %)			-
6,5 %.					-
			5 991	(-
	- 3,2 %, 194			10 388	-
(- 1,8 %, 188				-
			2,7 1,2 %,		-
	- 5,4 2,9 %, 2008		- 2,7 3,9 % [2].		-
					-
					-
					-

	2008	1 735	
	2 325		
	6,2 (108)		11,0 % (256)
01.01.2009	(
11 985,8		- 1 617,8	
		- 1 620,4	
		- 8 747,6	
		(3 521)	(1 912)
(18)	(1 456)		(1)
2007	(32)	(42)	
		143	
- 729,58			
	(77,2)	(76,7)	(64,7)
2,7		- 5,71	
		- 2,0	- 3,2)
		- 0,7	
	- 2,0)		
	(- 4,5		- 2,5 , “
			- 0,5)
[1].			
	2008	1 411	
	-	328 (30,3 %)	
2000		(972 , 68,9 %	
)		-	(21 , 1,5 %)
		1	2 2008
0,062		- 0,52 [12].	
		(84,1 %)	(15,0 %) [8].
		. 1.	
	461		- 300 (65 %)



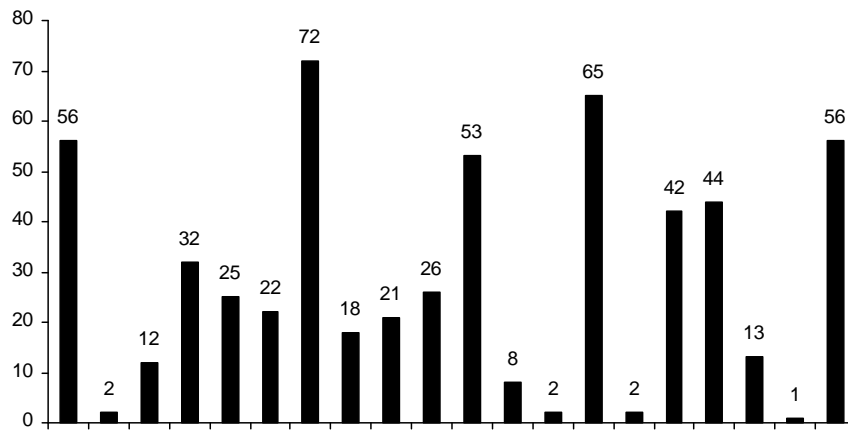
. 1.

([8]).

01.01.2009 . 51

521

(. 2) [12].



. 2.

()

01.01.2009 . (

[12]).

“ ”, “ ”.

“ ” (37) “ ”

(76), (9,9), “ ” (4

), “ ” (3,8

200 .), “ ” (35 .

) [9].

(. 3).

(. 3).

2008 .

- 22 670 (64,5 %), - 4 005 (11,4),

- 2 221 (6,3), - 1 385 (3,9),

- 1 380 (3,9), - 668 (1,9 %)

(.4) [1].

1990–2008 .

(1 000)

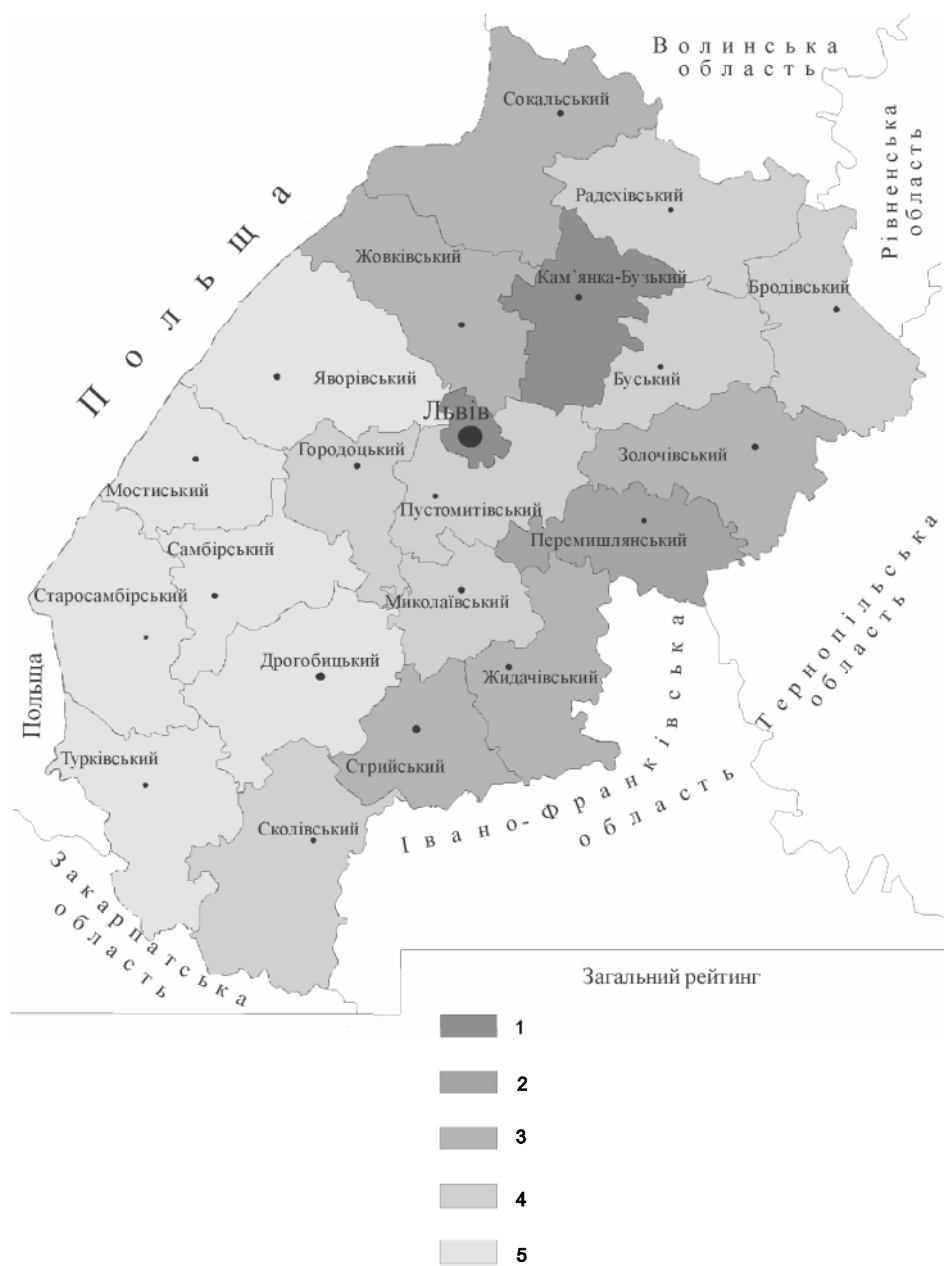
2008 . 1995 .

0,6.

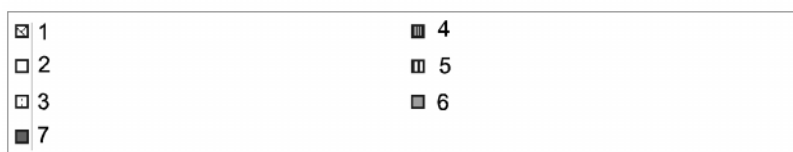
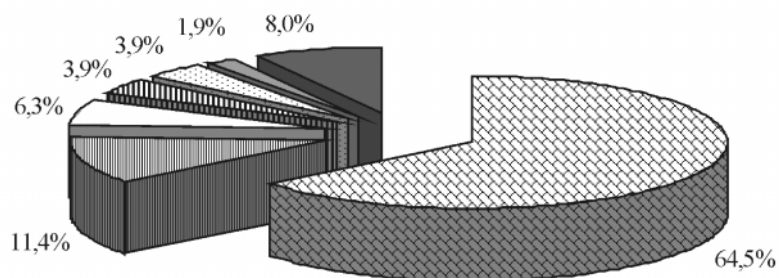
(0,82) (

0,82). 0,83.

0,62 0,37.



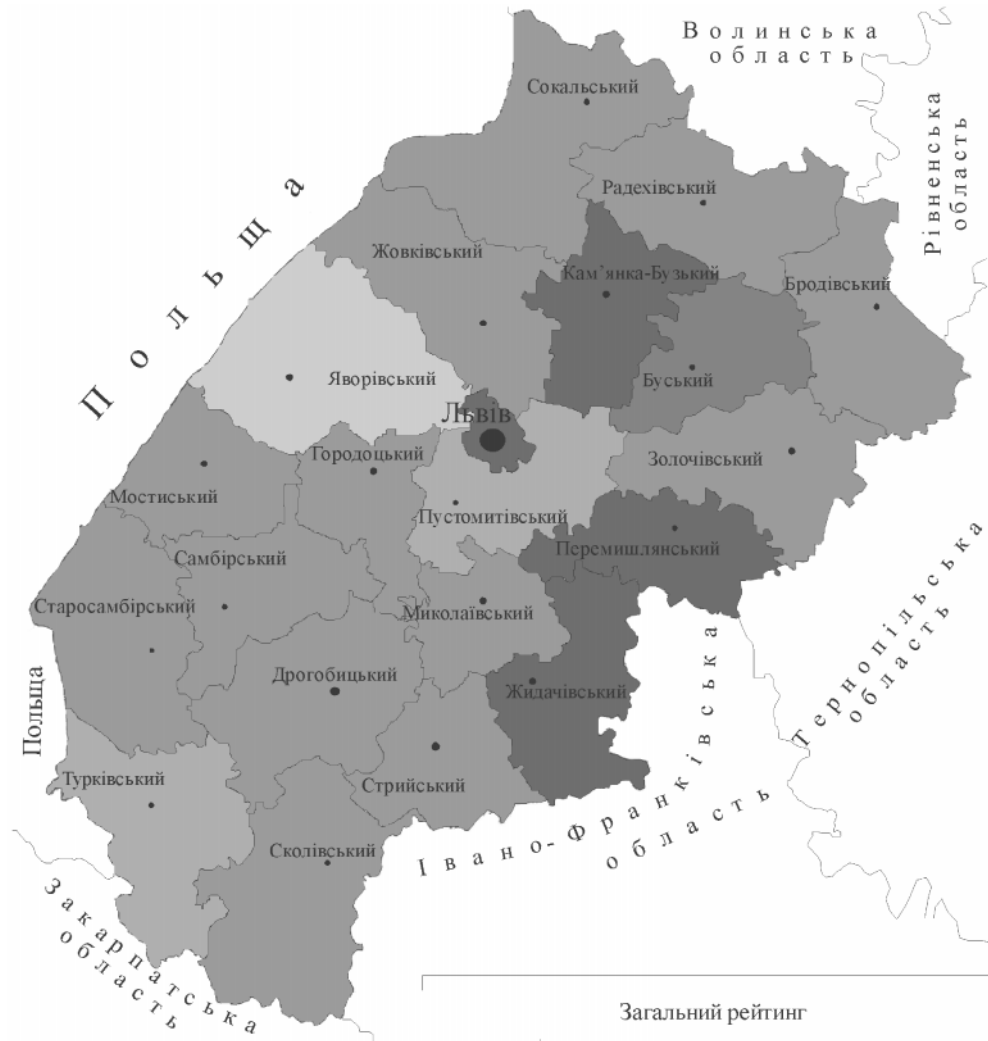
3. (-2); 2 – (-1); 3 – (0); 4 – (1); 5 – (2).



4. 2008 .., % ([1]: 1 - ; 2 - ; 3 - ; 4 - ; 5 - ; 6 - ; 7 - ;

[13]

1995	1756	10	168	53	966	89	70	81	3	104
1996	1785	13	177	50	924	97	69	88	3	110
1997	1924	13	190	60	1064	106	76	91	3	100
1998	2001	14	204	68	1054	111	97	100	4	92
1999	2212	14	50	99	1172	106	95	93	4	81
2000	2182	16	47	109	1127	115	103	96	3	84
2001	2157	16	47	103	1155	111	105	106	3	79
2002	2064	16	48	94	1085	108	105	102	2	80
2003	2073	17	50	95	1097	108	106	105	3	82
2004	2048	17	50	110	1043	111	108	108	2	79
2005	2087	17	52	116	1054	111	109	111	3	82
2006	2083	19	58	128	1031	111	107	112	3	84
2007	2172	20	58	134	1093	122	108	115	2	80
2008	2113	19	58	141	1046	120	102	114	2	81



5. : 1 – (1); 5 – (-2); 2 – (2) (-1); 3 – () (0); 4 –)

, , , - , -
 , , - , -
 . ()
 ,
 (. 5)
 : , , - , , , , , ,
 (), (, , , , ,
 , , , ,) , (-
 , (-)
 (, , ,
), , , (
) . , , -
 , , , (
).
 , , -
 , , ,
 ;
 ;
 , , , , , ,
 ;
 .

 1. -
 2004-2008 . , 2009. 224 .
 2. -
 2003-2007 . , 2008. 207 .
 3. . . / . . . : , 1971. 221 .
 4. . . / . . . , . . .
 // . . . 1977. 5. . 21-24.
 5. . . - / . . . //
 . . . : . . . , 1975. . 4. . 234-237.

6. ... / ... // ... 2 : ... ; ... : , 1996. . 154–155.
7. // ... , 1995. . 30–34.
8. : ... , 2009. 101 .
9. 2015 // . . . 2007 . , 2008. . 6. 326 .
10. / ... : , 1981. 175 .
11. / ... // 2010. . 17. . 187–194.
12. : <http://www.ekology.lviv.ua>
13. : <http://www.stat.lviv.ua>

HEALTH OF POPULATION OF LVIV REGION AS A RESULT OF REACTION TO THE ENVIRONMENTAL CHANGES

M. Petrovska

*Ivan Franko National University of Lviv,
Doroshenko St., 41, UA – 79000 Lviv, Ukraine*

The state and dynamics of the environmental factors on the territory of Lviv region have been described. The analysis of the pollution influence on the health of population has been carried out. The structure of disease incidence and mortality reasons have been given. Medical-ecological ranking of the investigated territory has been conducted. The ways of improvement of medical-ecological situation have been offered.

Key words: contaminant, quality of atmospheric air, quality of water, pollutant emission, medical-ecological situation, disease incidence, health.

13.07.2011

19.04.2011