

551.435

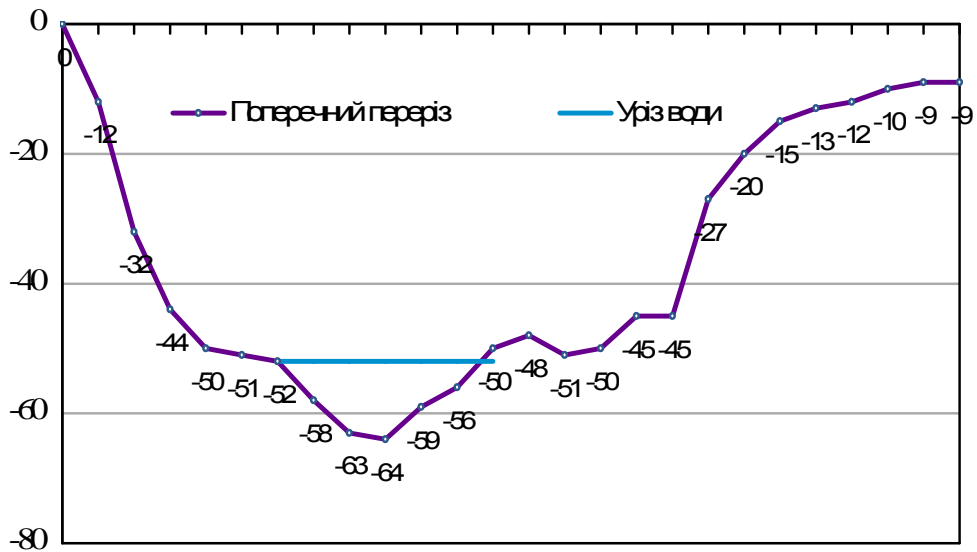
(2008-2010)

,
 , 41, . , 79000,
 , 2008 – 2010
 :
 : , , , , , .
 , , , , - , -
 , . , , - , , -
 -
 500-600 900-1000 , [1].
 -
 , - - -
 , ()
 , ,
 , 2008 – 2010 . , -
) ()
 25 . , ,
 - , , -
 . 2008 2009 (),
 [2].
 - , ;

—
 ,
 (2008 .— I (, 2009 — 2010 .—))
 ,
 ,
 ,— .

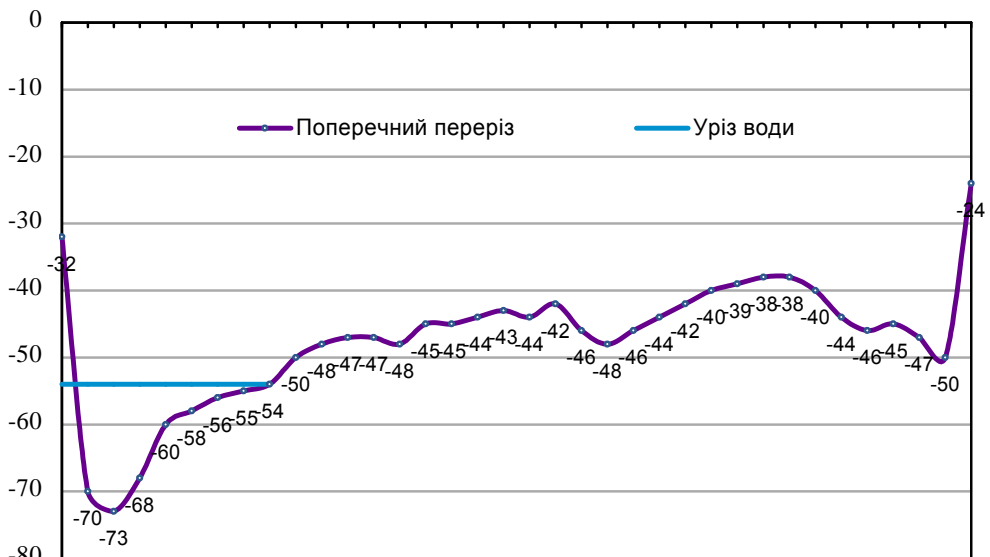


.1. 1 . .
 I 13
 (.1),
 (2008 .) ,
 2008, 2009 2010 . (.2—
 5) ,
 20 50–75 —
 (50–55 .) 2009 . 2010 ..
 ,
 —
 ,



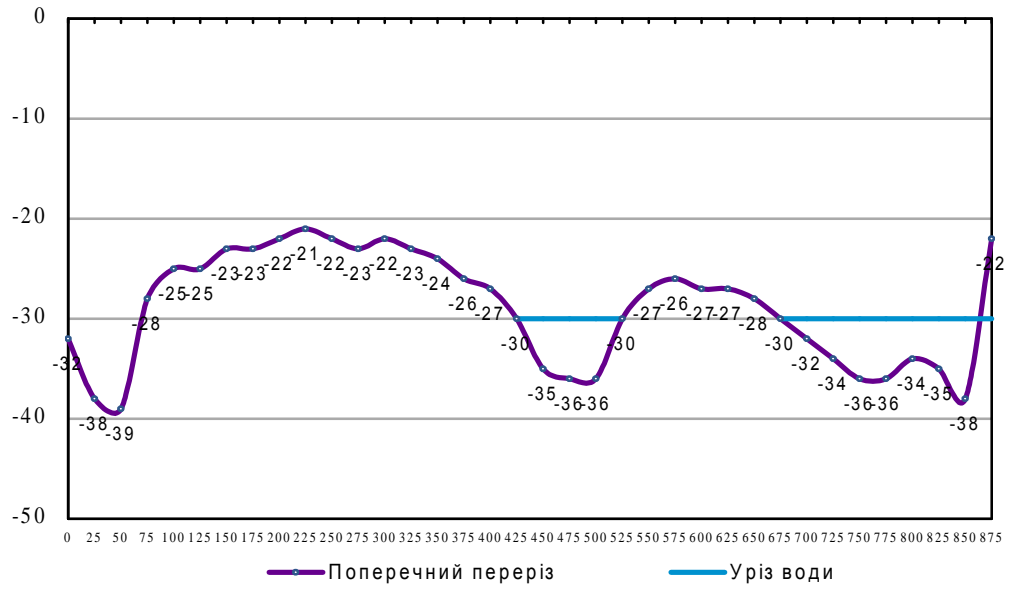
0 25 50 75 100 125 150 175 200 225 250 275 300 325 350 375 400 425 450 475 500 525 550 575 600 625

2.2. 1 ().
1, 2008 . ().

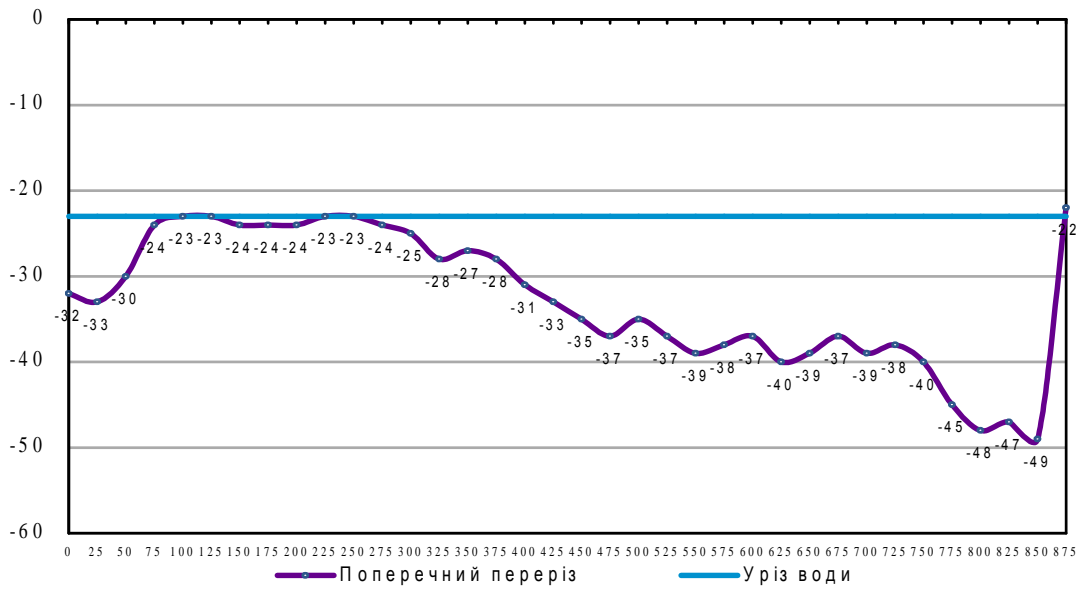


0 25 50 75 100 125 150 175 200 225 250 275 300 325 350 375 400 425 450 475 500 525 550 575 600 625 650 675 700 725 750 775 800 825 850 875

2.3. 1 ().
1, 2009 .



.4. 1 ().
1, 2010 .



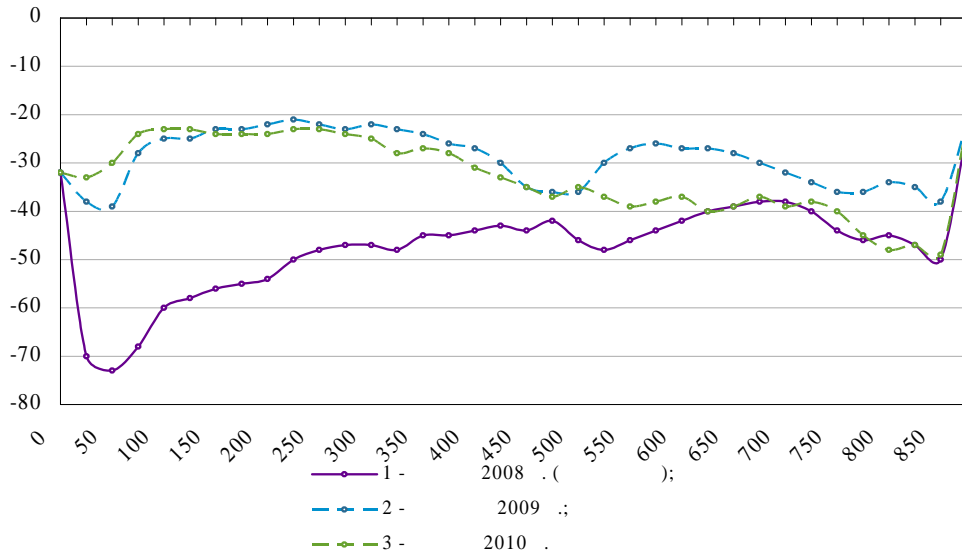
.5. 1 (. 14). 2
(. 6). -



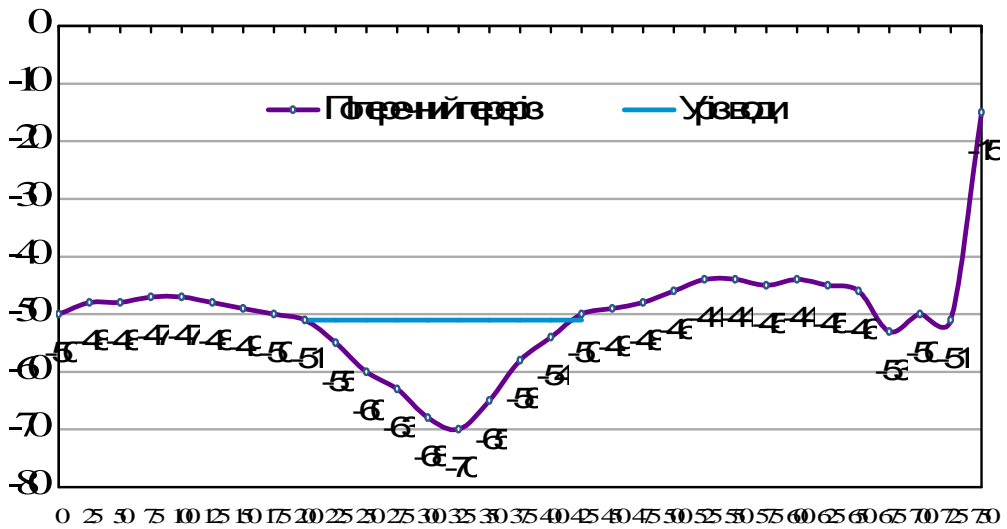
.6.

2

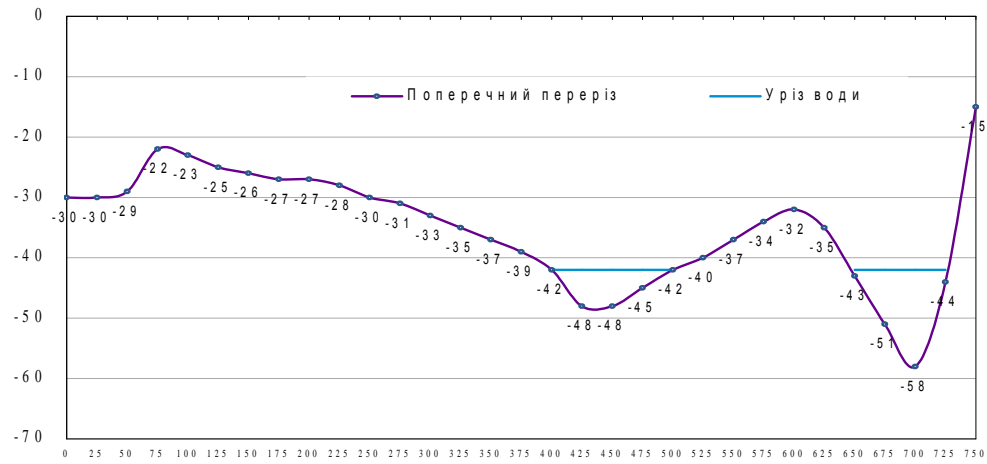
2009 – 2010 . – 2008 . (.7-10), -
 2. 100-120 , – 25-30 , -
 40-50 . 2009
 2010 . ,
 1 , 2, -
 3
 2 (.11). -17,75 . 12 -
 3
 2008 . 2008 . (.12-15) , -
 30-40 , – 75-85, 9-100 . -
 2009 . 2010 . , -
 - (



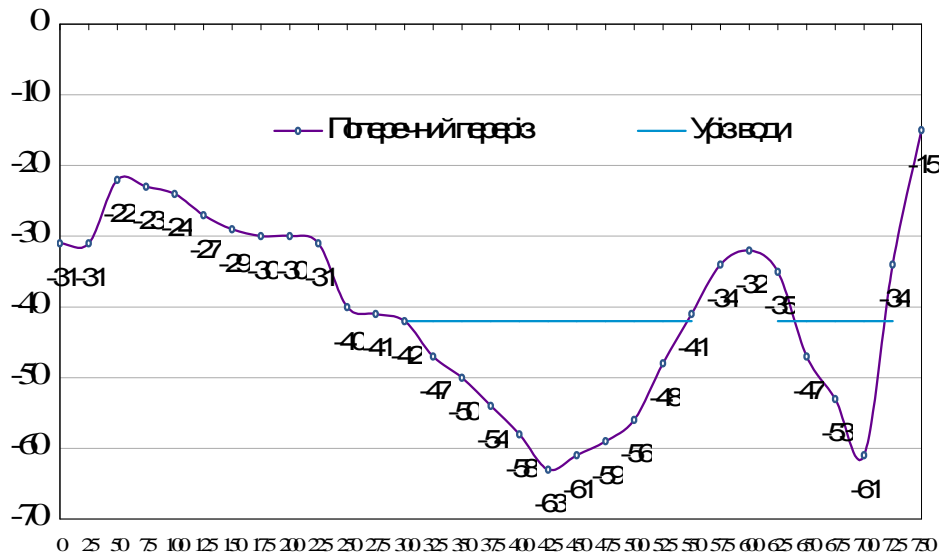
7. 1 (2). 2, 2008 . ().



8. 1 (2). 2, 2009 .



9. 1 (2), 2, 2010 .

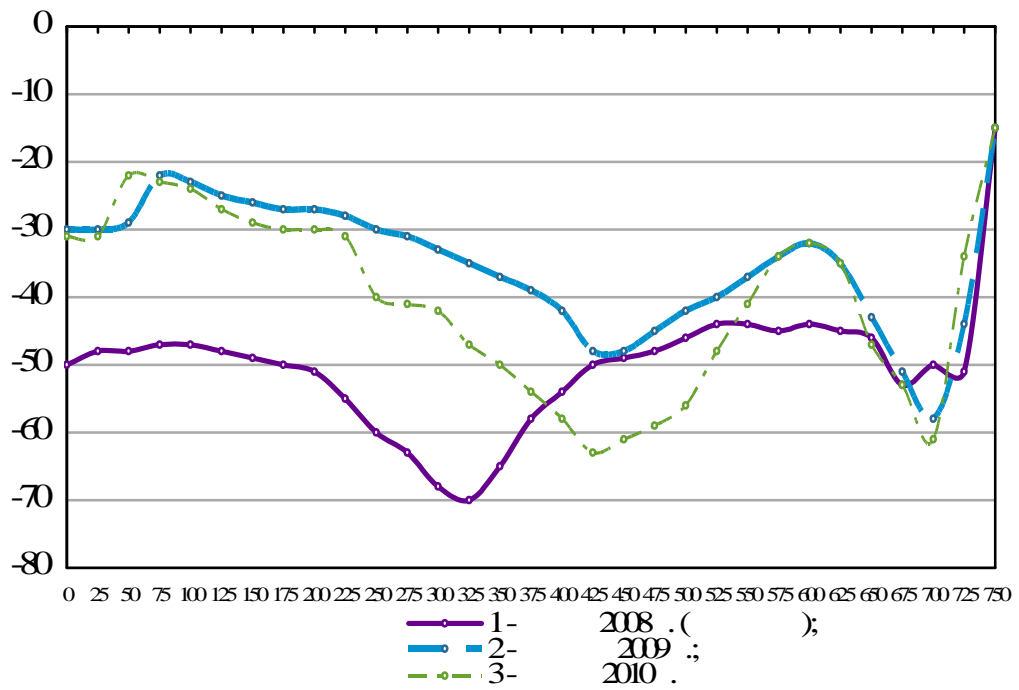


10. 1 (2),



. 11.

3 . . .



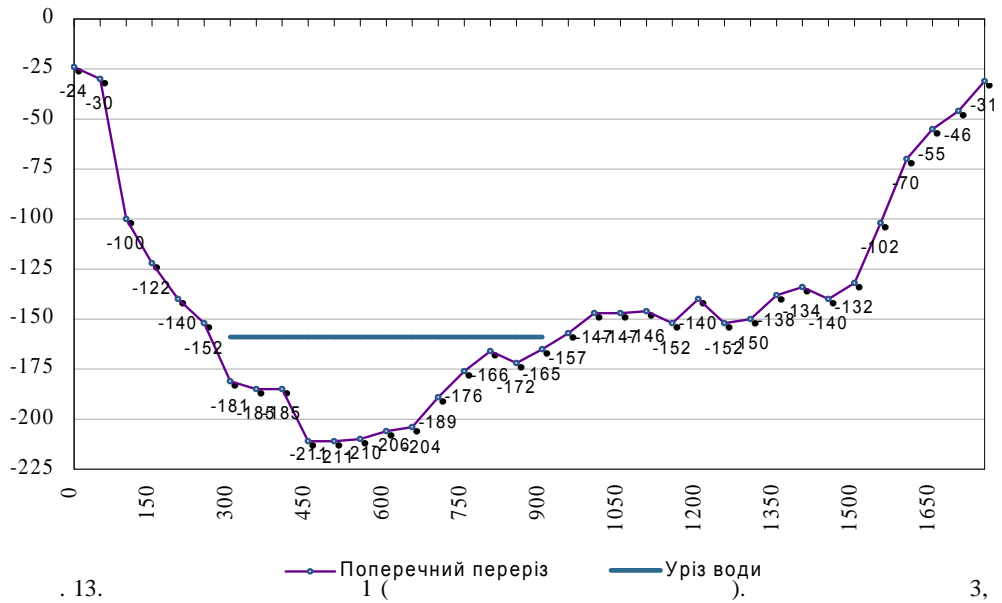
. 12.

1 (

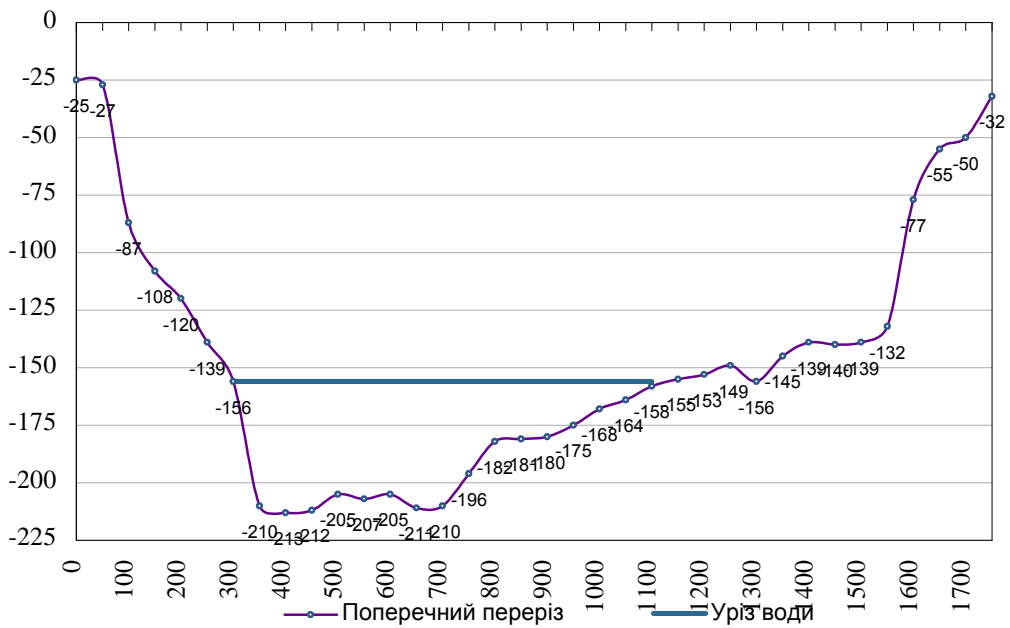
).

3,

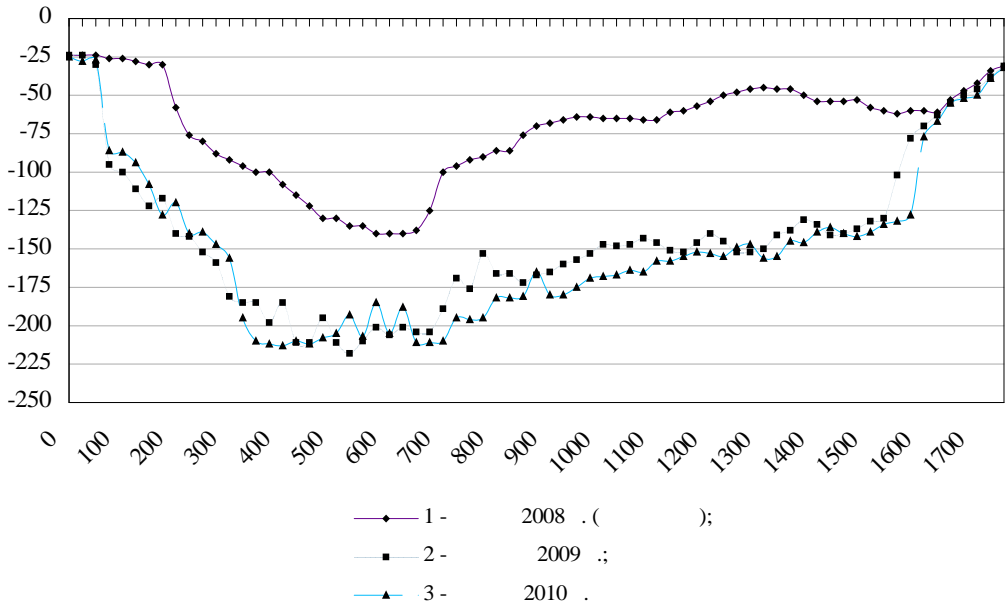
2008 . () .



. 13. 2009 . 1 () 3,



. 14. 2010 . 1 () 3,

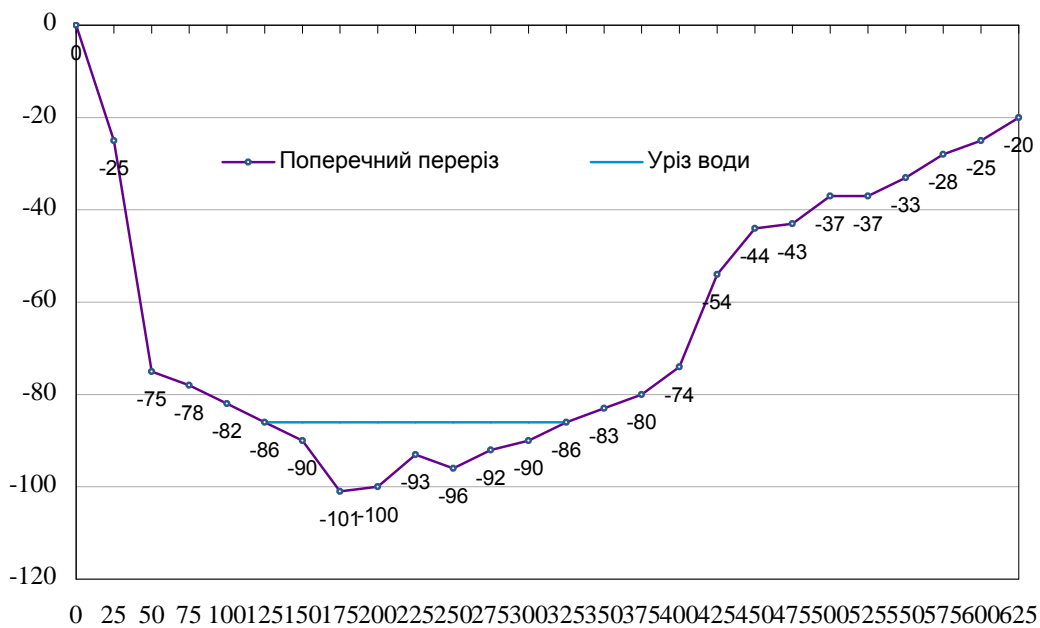


. 15. 1 ().
 2 - (. 16).

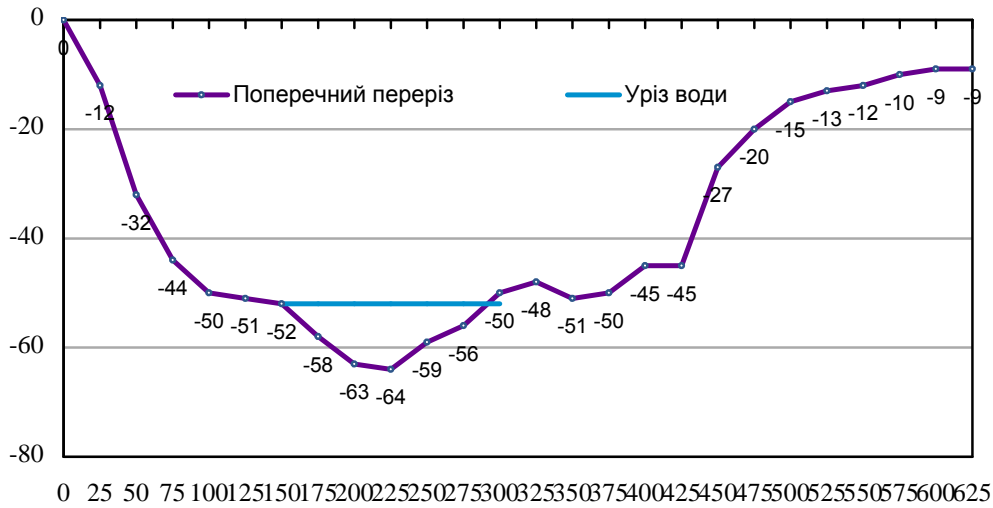


. 16. 1 - .

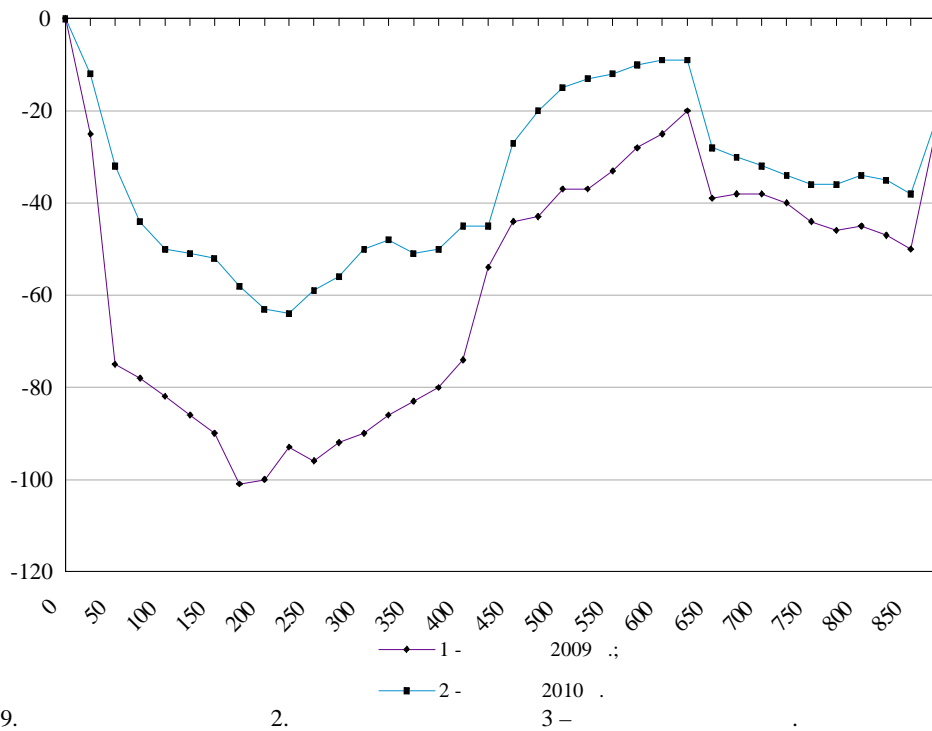
2009, 2010 . (. 20).
 2008 . (. 21-24).
 2009 2010 . (8-10), (10-25)



. 17. 2. 1 (), 2009 .



18. 2. 1 (), 2010 .

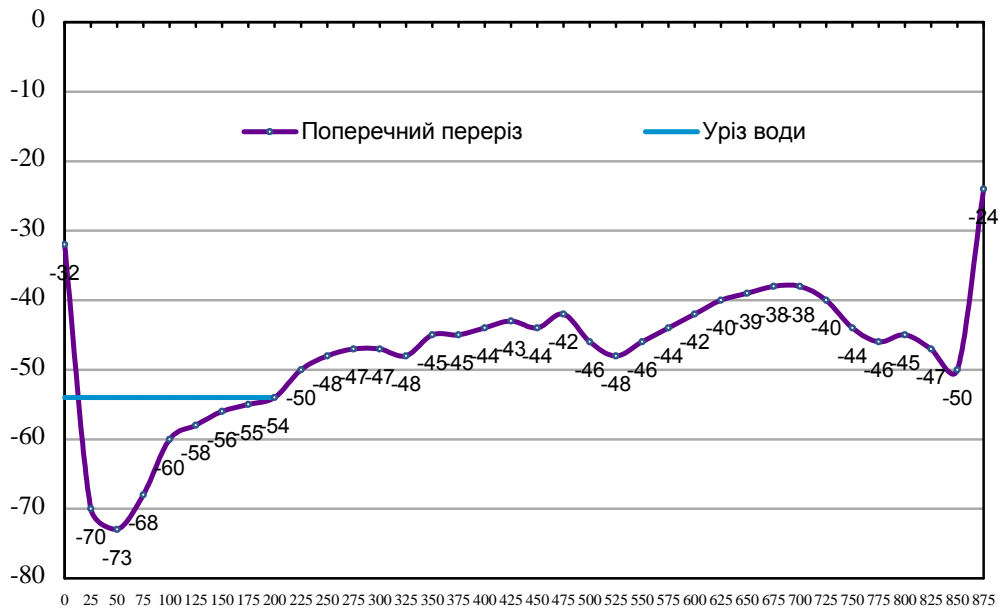


19. 2. 3 -



. 20.

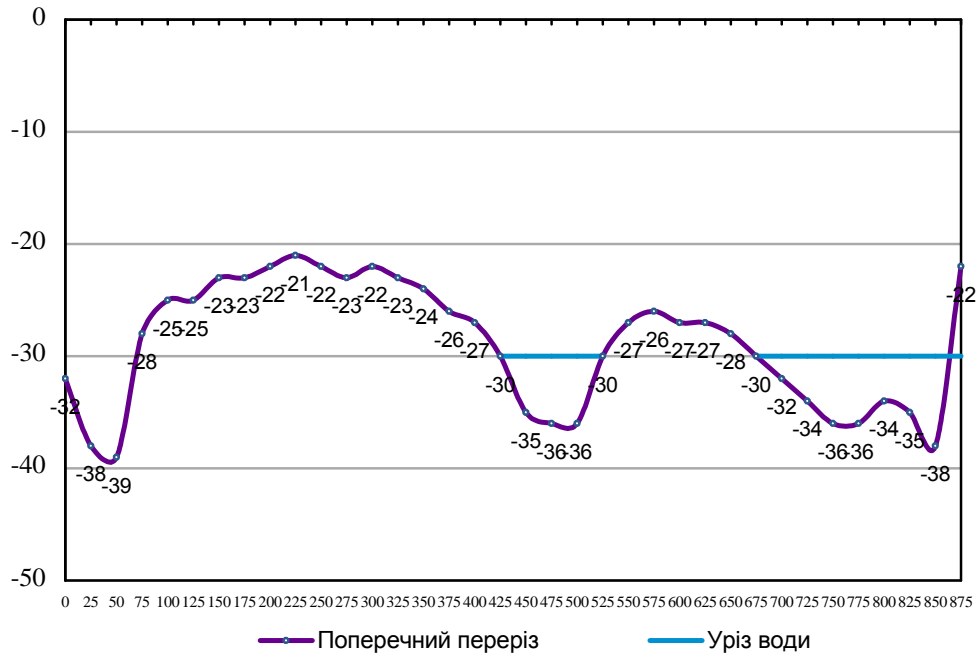
1 -



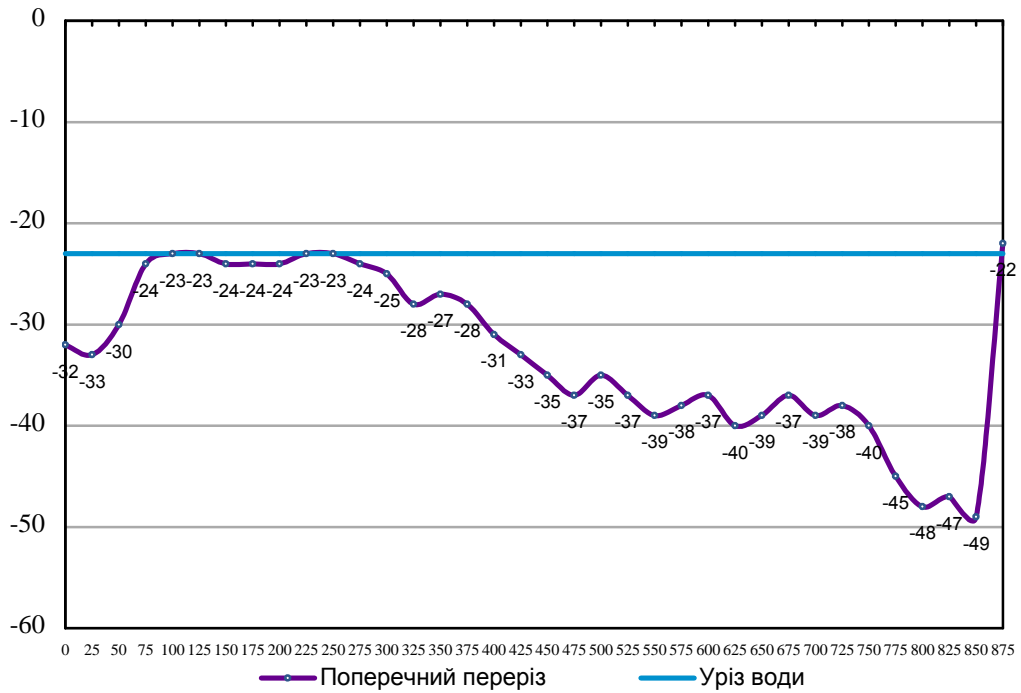
. 21.
)

3 ()

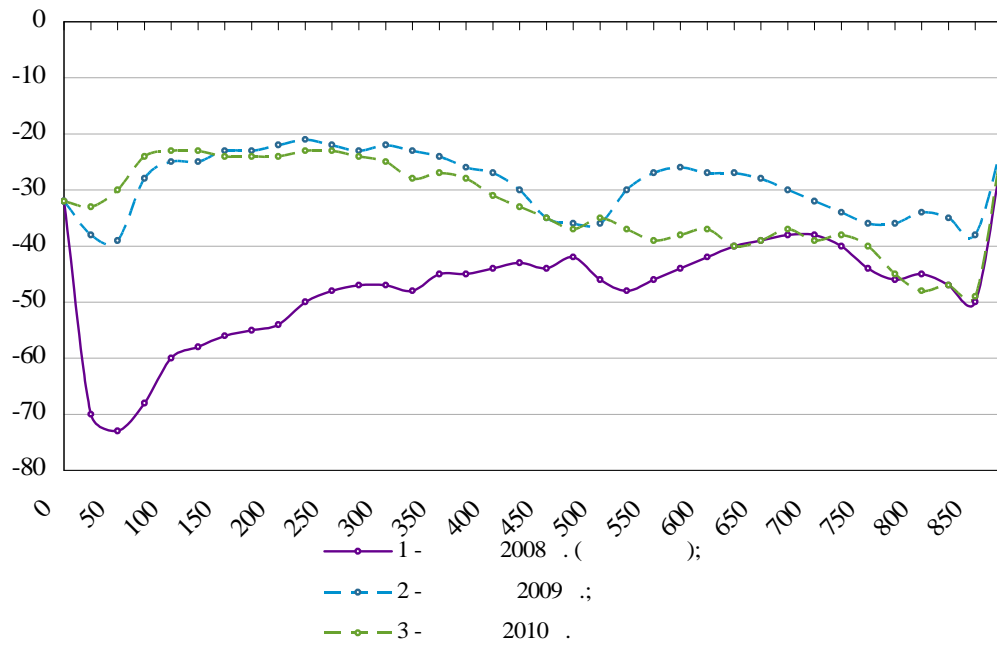
1, 2008 . ()



. 22. 3 (). 1, 2009 .



. 23. 3 (). 1, 2010 .

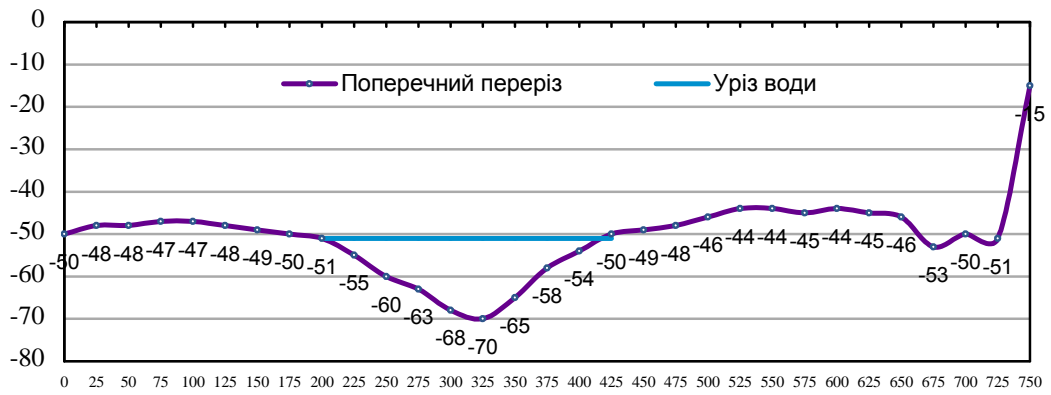


. 24. 3 (). 2
 (. 25).

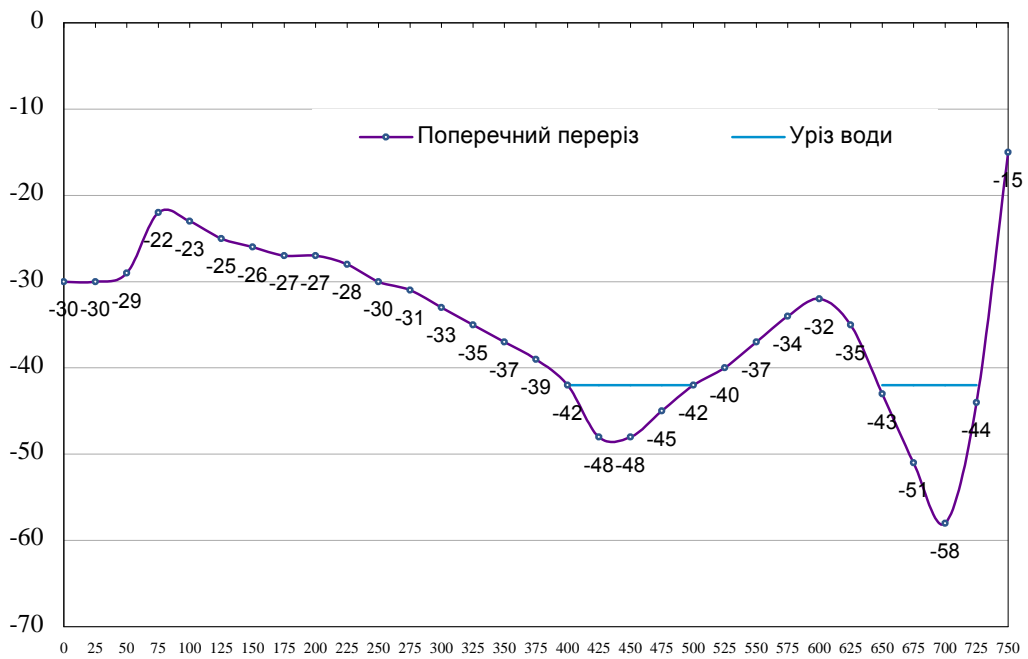


. 25. 2 - .

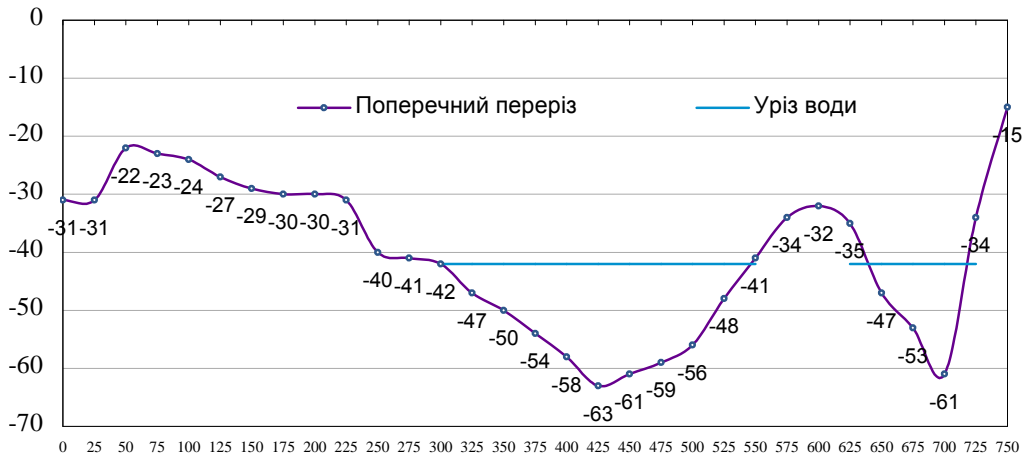
2010 .., 2008, 2009, -
 70 . -
 (2009 - 2010 .) 25-37 .
 2010 . 64 (,
).



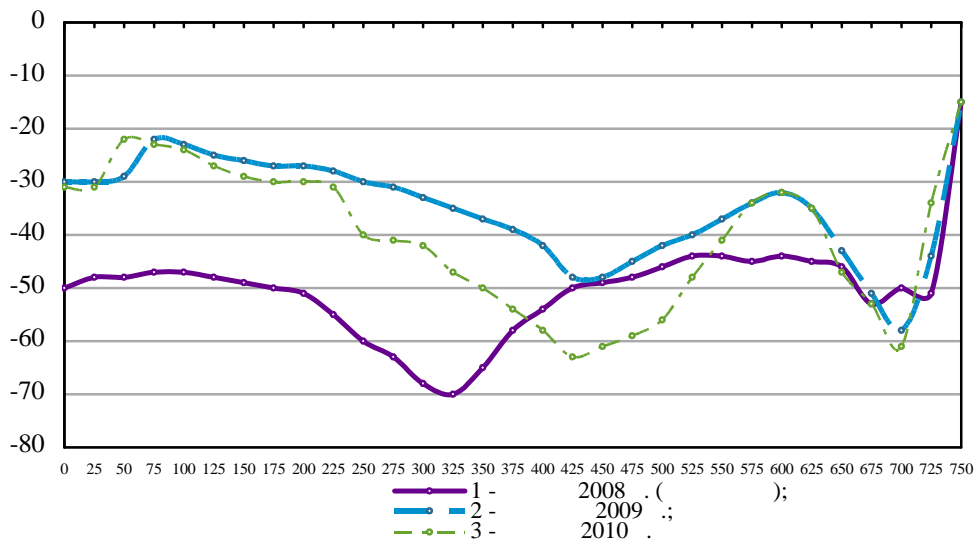
. 26. 3 (). 2, 2008 . ().



. 27. 3 (). 2, 2009 .



28. 3 (). 2, 2010 .



29. 3 (). 1 - 2008 . (); 2 - 2009 . ; 3 - 2010 .

2008 – 2010 . , -
 , -
 1 (.)
 3 (-
), 80 . 2 –
 , 40–45 .

- 3,
- 37 (1) 30 (2).
- 2008 .. , , , .
-
1. // ,2008. . 98–106.
 2. ,2008–2009.

**RESULTS FOR RESEARCH CHANNEL PROCESSES IN THE UPPER
PRUT RIVER BASIN (2008–2010)**

V. Dudych

*Ivan Franko National University of Lviv,
Doroshenko St., 41, UA – 79000 Lviv, Ukraine*

Based on the laying of three cross sections at different times in the Prut river, streams Prypir and Foresyk, the annual changes during July 2008 – April 2010 have been analyzed such as the intensity of depth and lateral erosion, sediment accumulation, deformation of the beds.

Key words: cross-section of the river, deep and lateral erosion, accumulation, riverbed.

(2008–2010 .)

41, . , 79000,

2008 – 2010 .:

01.07.2010

16.11.2010