

911.3:314(477)

. . . ,41, . . ,79000, , . (032)2394573

2001 2009 .

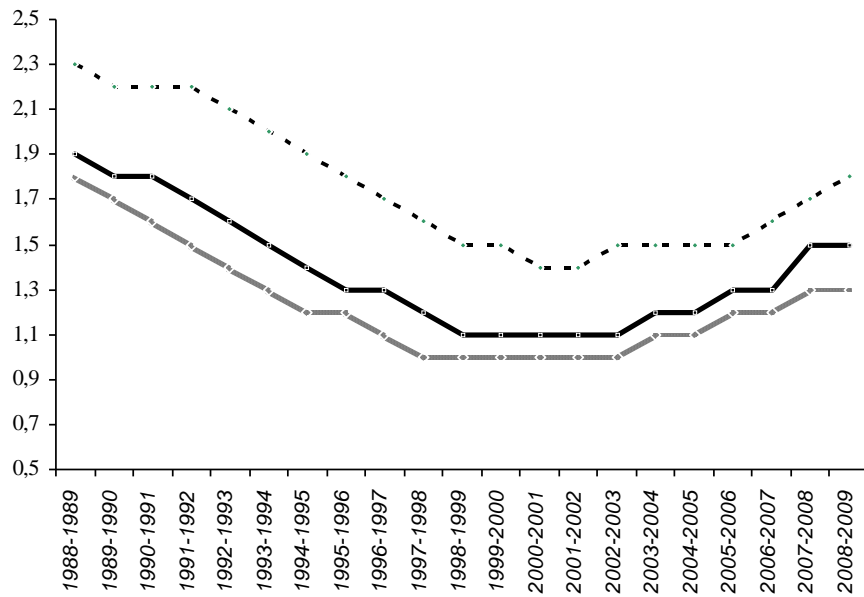
20- 16

40 %,

1950 .

4,9 , 2009 . 2,5

2001 . ( . 1).  
 - 1,1 ( 7,7 %),  
 2002 . 376,4 . . . . . 2009 .,  
 512,5 . . . . . 2010 . . . . .  
 14,5 . . . . .  
 2000-2002 . . . . . -7,6 % ( . . . . . )  
 2009 . -4,2 %,  
 2010 . -4,0% ( . 2).

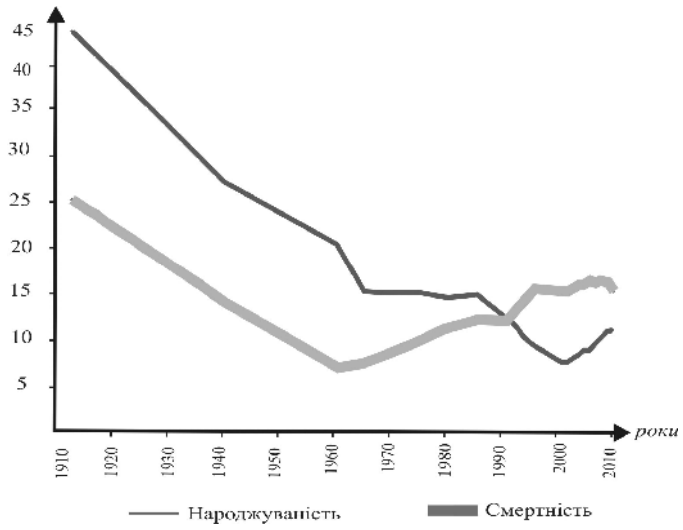


.1.

1.

“ ”  
 35-39  
 90- 6 %.  
 35-39  
 ( 1,2 1,6 % ) .

15,6 % - 35 [1, .31].



.2. , %.

35 - 31 % ( - 42 %, - 48 %). 21 %, 35 ,

2. , 25,1 % 80-

[8, .25].

1983 . - 807,1 , - 23 ,

- 26,5 [8, .21], 2006 . 2009 . 23,6 % 1991 . 26,3 % 11,5 % [6,

2007 ., .53]. 2010 .

. 2020 . -

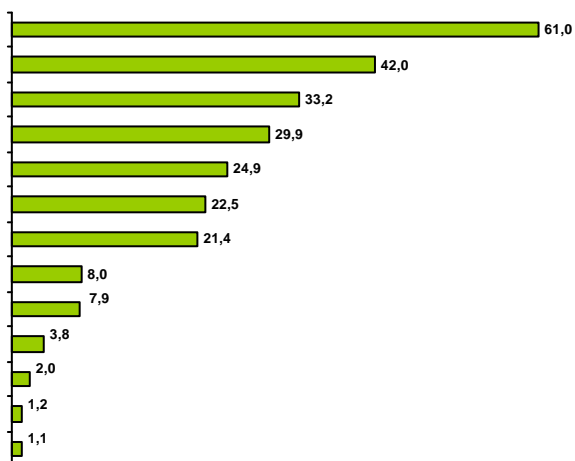
2001 . , 2050 .

2,5

3. , 2008 .  
 2005 . 2008 .  
 ( . ).

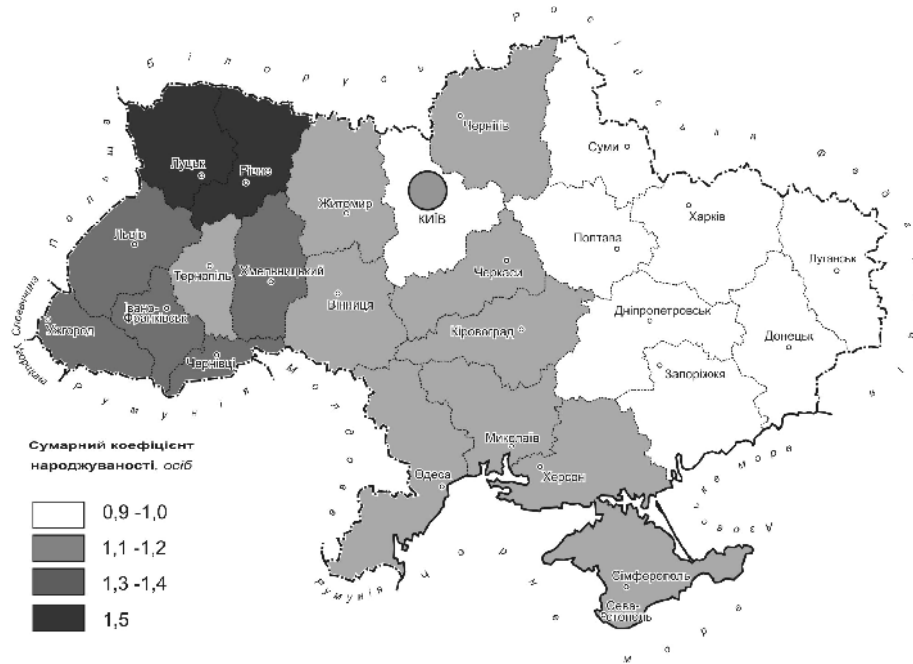
	01.01. 2001	01.01. 2002	01.01. 2004	01.01. 2005	01.04. 2005	01.01. 2007	01.01. 2008	01.01. 2011
3-		40	40	104	104	120	130	130
	180	200	725	1500	8497	8500		
							12240	18000
							25000	37000
							50000	73500

“ ”  
 . 3. , , 2009 .  
 , 27 %  
 [5,  
 . 96].

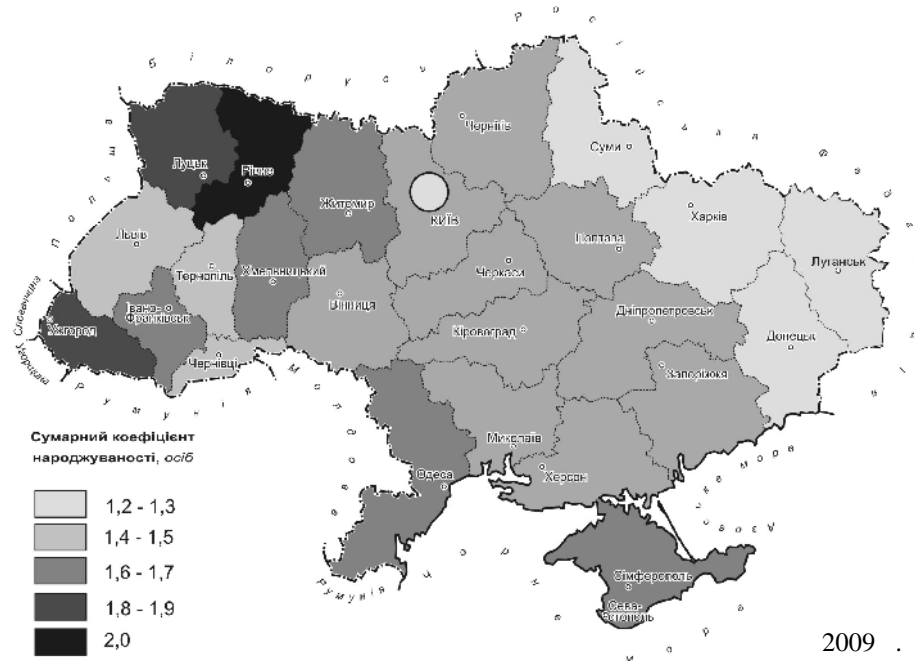


. 3. , % ( , 2009 . ) [7, . 210].





2001 .



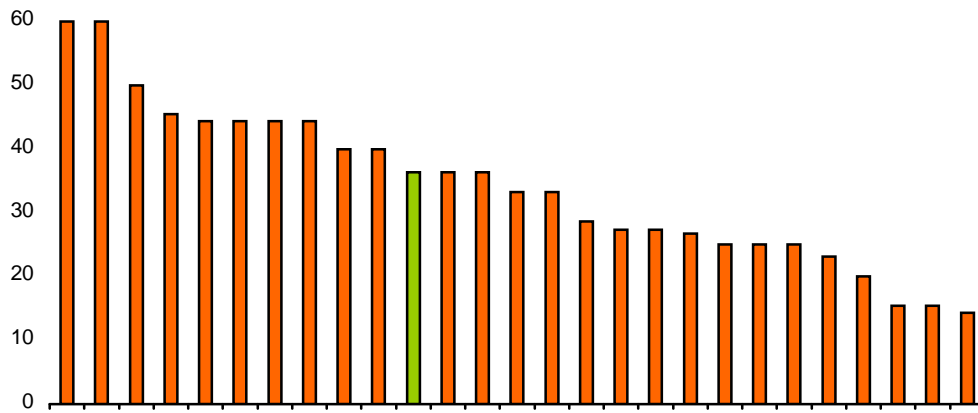
2009 .

.4.

( 18 ) [3, . 87]. , -

(53,2 % [4, . 15]), , -

( 2,2 ). -



.5. 2001–2009 ., %.

) ( , -

1. . . . . 2009. 12. . 28–38. // -
2. . . . . 2010. 1. . 55–62. //
3. . . . . // . 2007. 4. . 80–89.
4. . . . . (1994 . .) // . 2009. 12. . 12–27.
5. . . . . : // -
2010. 1. . 90–97.
6. . . . . // -
7. . . . . 2009. 2. . 48–54. / . . . . -
8. . . . . //
9. . 2010. 1. . 20–27. : <http://www.ukrstat.gov.ua/>

## THE IMPACT OF DEMOGRAPHIC POLICY ON BIRTH RATE PROCESSES IN UKRAINE

### I. Hudzeliak

*Ivan Franko National University of Lviv,  
Doroshenko St., 41, UA – 79000 Lviv, Ukraine*

The article analyzes the dynamics of birth rate and natural increase of population of Ukraine in 20–21th century. The influence of age structure and demographic measures pro-natality policy on birth rate trends today. An comparison was made between regional-level birth rate in 2001 and 2009. The groups of regions were highlighted with the highest rate of change of the total birth rate for the period.

*Key words:* pro-natality policy, the total birth rate, reproductive behavior, the nature of population reproduction.





. . . , 41, . . . , 79000,

- I .

:

02.0942011  
19.04.2011