

528 + 911

,
.
... ,41, . ,79000,
,
:
[7, 8].
,
() (1980-
)
-
[19, 23] [18].
[12–14, 16]. [10, 22].
- -
1:250 000 [27].
,
[21].

... [3],

() ,

[9]. [2] [1].

[30] [31].

Land-
sat TM/ETM+, ()
2000 ., [29].

[20]

[4, 5], ()

() [11], ()

() .

() ,

[11].

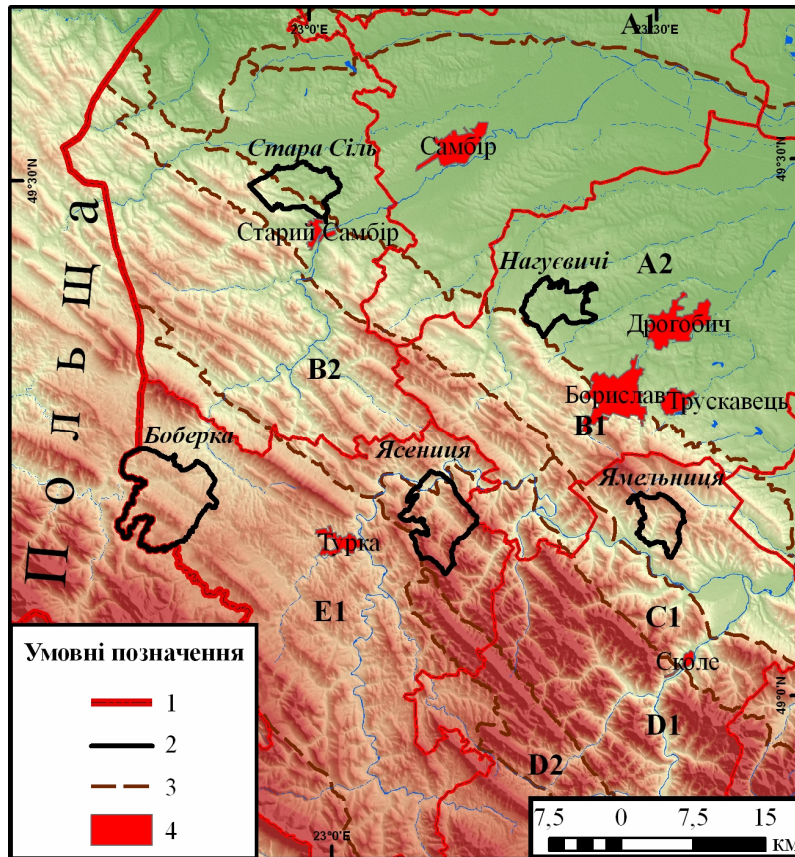
[28].

“ (land cover) () (, [29, 30, 31]). [24].

“ ”

(,)

(2 061,4) (2 513,2) (6 797,2) (4 313,5)
 - (.1).



.1.
 [12, 27]:
 B1 - ; A1 - ; A2 - ;
 D2 - ; E1 - ; C1 - ; D1 - ;
 ; 3 - ; 4 - ; 1 - ; 2 -

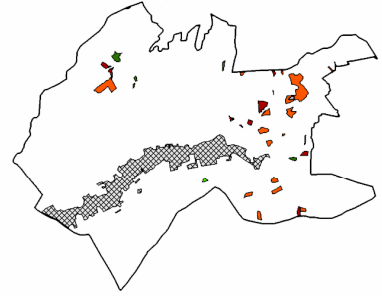
(1989–2005)	10	1,4	-	-	68,5	20,1
(1989–2005)	53,2	9,8	8,0	-	25,4	3,6
(1976–2006)	30,5	17,2	31,5	0,5	15,6	4,7
(1983–2008)	81,0	9,4	0,4	-	4,5	4,6
(1976–2005)	10,4	24,7	35,7	0,2	26,2	2,9

– 58,8 (2,3 %), – 733,5 (10,8), – 622,9 (14,4 %), – 135 (4,2), – 582,7 (28,3),

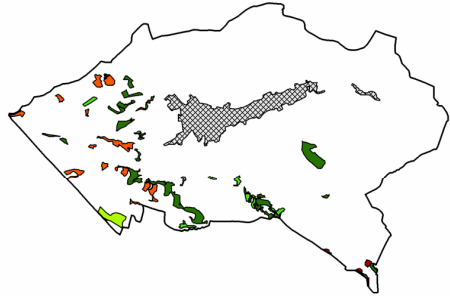
3,7 / , – 8,4, – 19,4, – 29,3, – 21,5 / .

(.2).

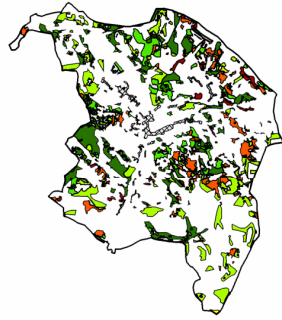
Нагуєвичі



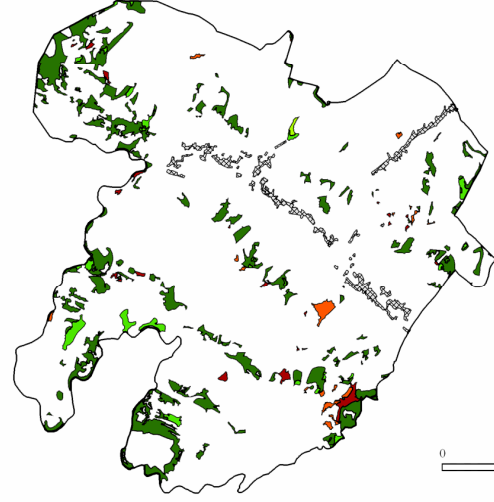
Стара Сіль



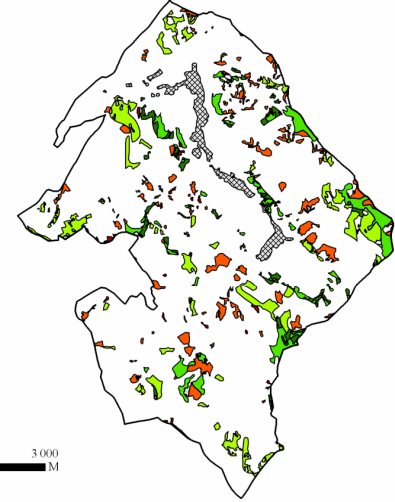
Ямельниця



Боберка



Ясениця



Умовні позначення:

1

Категорії зміни НП:

2

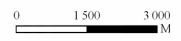
3

4

5

6

7



6- ;3- ;7- ;4- ;5- ;2- ;

3. . . . / . . . , 1983. – 240 .
4. : / . . . – . . . : – , 1993. – 224 .
5. : . . . 2 / . . . – . . . : – “ ”, 2005. – 503 .
6. / . . . / . . . – . . . : +, 1999.
7. “ ”/ . . . , 2004. – 32. – . 383.
8. “ ”/ . . . , 2005. – 51. – . 547.
9. / [. . . .]
10.] – : , 2001. – 162 . () – / . . . / – 1964. – . 2 – . 35–43.
11. // – 2006. – . 33. – . 186–193.
12. // . . . // – 2008. – 3. – . 59–68.
13. / . . . , . . . // : 3 . – . 2. – . . . , 1990. – . 113–114.
14. : – / – : . . . , 1999. – 288 .
15. . ArcMap. . . 1 / . . . – . . . : +, 2001. – 290
16. 1:200 000 / . . . // – 2003. – . 29. – . 58–65.
17. / . . . , . . . , . . . – . . . : , 1991. – 236 .
18. / . . . – : – . . . , 1972. – 152 c.
19. / – : – , 1968. – 267 .
20. // – 2010. – . 3(60). – . 83–92.
21. , / . . . // – 2011. – . 1(62). – . 61–70.
22. / . . . // – 1965. – . 3. – . 25–29.
23. / – : . . . , 1988. – 208 .
24. *Comber A.J.* Using semantics to clarify the conceptual confusion between land cover and land use: the example of ‘forest’ / A.J. Comber, R.A. Wadsworth, P.F. Fisher // *J -l of Land Use Science*. – 2008. – Vol. 3. – N. 2–3. – . 185–198.
25. *Jarvis A.* Hole-filled SRTM for the globe Version 4 [Electronic resource] / A. Jarvis, H.I. Reuter, . Nelson, E. Guevara // CGIAR-CSI SRTM 90m Database, 2008. – : <http://srtm.csi.cgiar.org>.
26. *Bossard M.* CORINE land cover technical guide / M. Bossard, J. Feranec, J. Otahel. – EEA, Copenhagen, 2000.
27. *Kruhlov I.* Natural geoecosystems / I. Kruhlov, B. Mukha, B. Senchyna // Transformation processes in the Western Ukraine: Concepts for sustainable land use. – Berlin, 2008. – . 81–97.
28. *Lambin E.F.* Introduction: Local processes with global impacts / E.F. Lambin, H. Geist, R.R. Rindfuss // Land use and land cover change: Local processes and global impacts. – Berlin, 2006. – . 1–9.

29. *Kuemmerle T.* Cross-border comparison of land cover and landscape pattern in Eastern Europe using a hybrid classification technique / T. Kuemmerle, P. Hostert, K. Perzanowski, V.C. Radeloff // *Remote Sensing of Environment.* – 2006. – Vol. 103. – P. 449–464.
30. *Kuemmerle T.* Cross-border comparison of post-socialist farmland abandonment in the Carpathians. / T. Kuemmerle, P. Hostert, V.C. Radeloff et al. // *Ecosystems.* – 2008. – Vol. 11. – P. 614–628.
31. *Kuemmerle T.* Forest cover change and illegal logging in the Ukrainian Carpathians in the transition period from 1988 to 2007 / T. Kuemmerle, O. Chaskovskyy, J. Knorn et al. // *Remote Sens. Environ.* – 2009. – Vol. 113. – P. 1194–1207.

21.11.2011
20.12.2011

GEOECOLOGICAL ANALYSIS OF MODERN LANDSCAPE DYNAMIC OF THE LOW MOUNTAIN UKRAINIAN CARPATHIANS

A. Smaliychuk

*Ivan Franko National University of Lviv,
Doroshenko St., 41, UA – 79000 Lviv, Ukraine*

This paper analyses change of land cover, as central component of biogenic geoecosystems (GES), with respect to the natural landscape structure, proximity to roads and settlements and land use structure. Five model municipalities were selected in the low mountain Ukrainian Carpathians. The land cover pattern of 1970–80s was digitized from the topographic maps, while its recent change was manually detected using high resolution images. After the natural GES data were overlaid with actual land cover the biogenic GES were distinguished. Six types of LC change were detected in this study. A common trend in study areas is the increase of the forested area owing to forest succession on former agricultural land.

Key words: Ukrainian Carpathians, geoecosystems, land cover, modern dynamic, GIS.

A.

, 41, , 79000,