

551.435

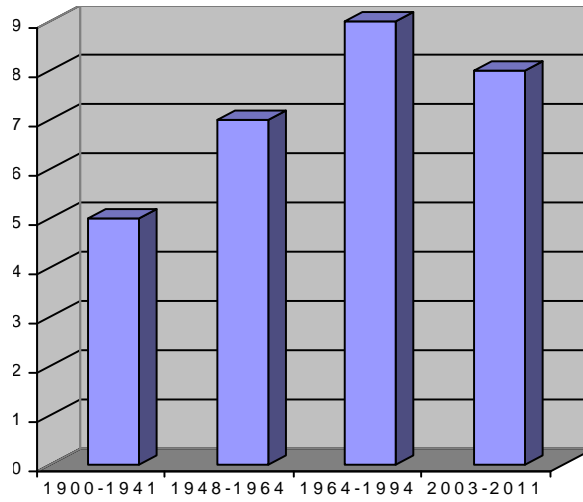
, 57, . - , 76018,

[3, . 16].

[3, . 16].







. 2. 1900-2011 . -

1927, 1955, 1969, 2007, 2008 . ( . 3).  
 8-9 1969 . -  
 1 530 <sup>3</sup>/ ( - 12,3 <sup>3</sup>/ ),  
 - 4-5 / , - 2,5-5,0  
 297 . <sup>3</sup> , -  
 30-35 . -  
 - 25-30 [4].  
 2007 . ,  
 30×20×35 .  
 ( . 4).  
 2007 . ( . 5).  
 (5-20 ).  
 2008 .. - ,  
 2009 .  
 1-20 .



.3.

1969 .

[4].

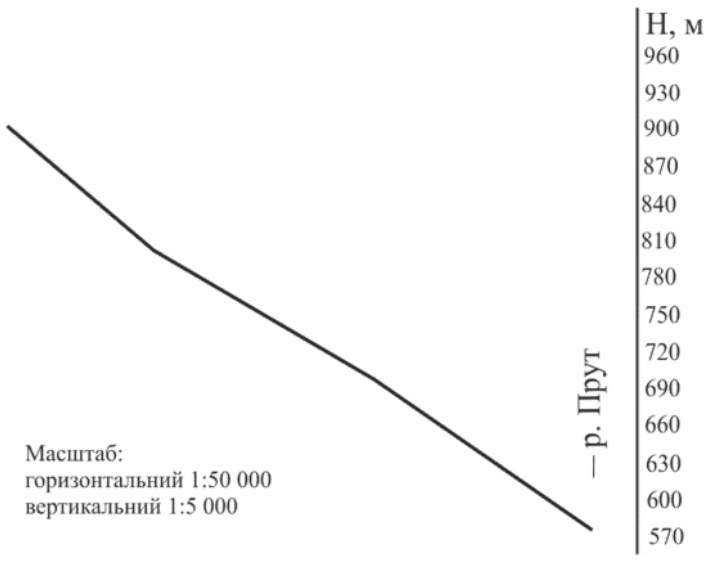


.4.

2007 .



2010 . . . . . -  
 - ( . 7). . . . . 1  
 , 900 . 3. 7-10 . 5-7 . ;



.7. . . . . ( . . ) .  
 , . . . . . 2007 . ,  
 . . . . . 2007 .

1. . . . . / . . . . . -
  2. . . . . // . . . . . -1983. - .194. - .116-121. -
  3. . . . . : . . . . . ,1995. - 114 . -
- : . . . . . : 11.00.04 -  
 / . . . . . - . . . . . ,1994. -23 .

03.10.2011  
 20.12.2011

**MUDFLOW PROCESSES IN THE MOUNTAINOUS PART OF THE PRUT RIVER BASIN****M. Klapchuk**

*Vasyl Stefanyk Precarpathian National University,  
Shevchenko St., 57, Ivano-Frankivsk, UA – 76000, Ukraine*

The results of mudslide processes studies in the mountainous part of the Prut River basin in the article are describes. The basic reasons for the development of mudslide processes are discovered. The mechanism of mudslide is investigated and most of them are characterized.

*Key words:* Mudslide processes, Prut River basin, rocks, sediments.