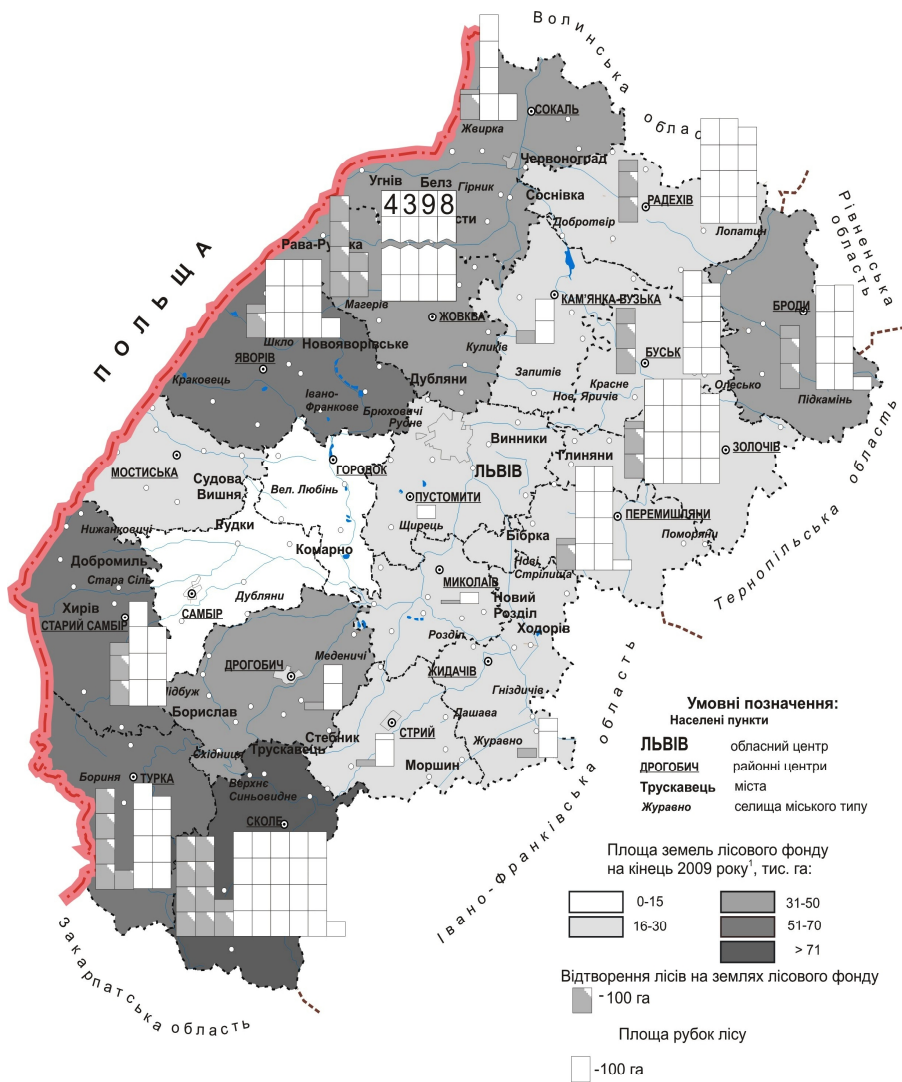


[1].



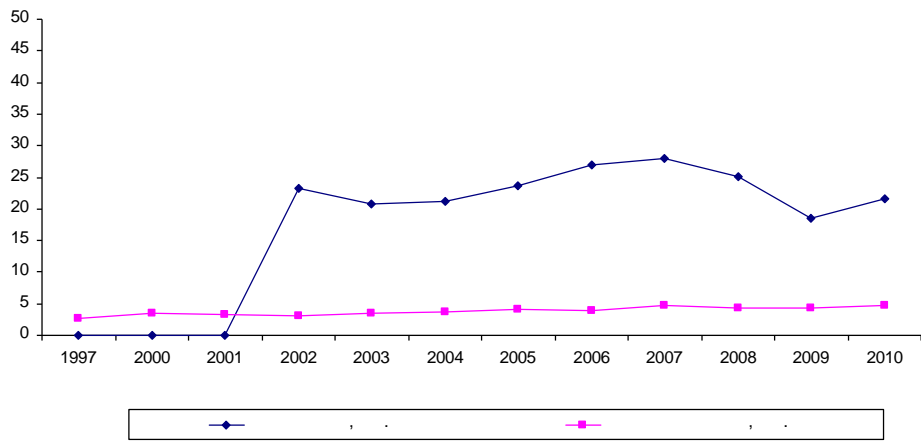
¹ За даними Головного управління земельних ресурсів у Львівській області.

2009 . [5].

. 1.

[8]

	1997	2000	2001	2002	2008	2009	2010
3	679,5	774,1	797,9	807,0	1166,0	960,4	1106,8
:	350,6	398,6	410,5	393,2	501,4	430,7	527,5
,	86,7	93,7	106,7	129,2	303,2	198,9	240,3
	239,6	269,2	272,2	275,0	349,8	320,8	334,3



. 3. . [8].

2010 . 831,8 . 3

92,2 . 3 .

2010 . 2 043 , 1 371

33 % . , 672 ,

106

16,5 .

92,3 %

91,3 %.

30,6 -

15,2 -

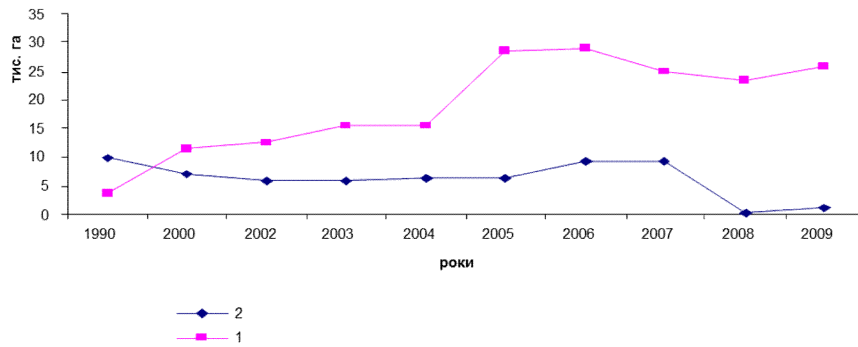
2009 . 37 309 -

25,8 . , 2009 -

3 . , 20 . , 1990 (. 4) [4]. 2005 .

23,3 . . , 92,6 %, (22,3 . . , 78,2 % 2005 .), 15 , 0,1 % - - (0,1 . . , 0,4 % 2005), 1,9 , 7,3 %, (6,1 , 21,4 % 2005 .).

1,1 . . , 4,8 % 2010 . 2005 . 6 (6 172 , 39,7 %), 1990 9 (. . 4). 2009 . 2005 .

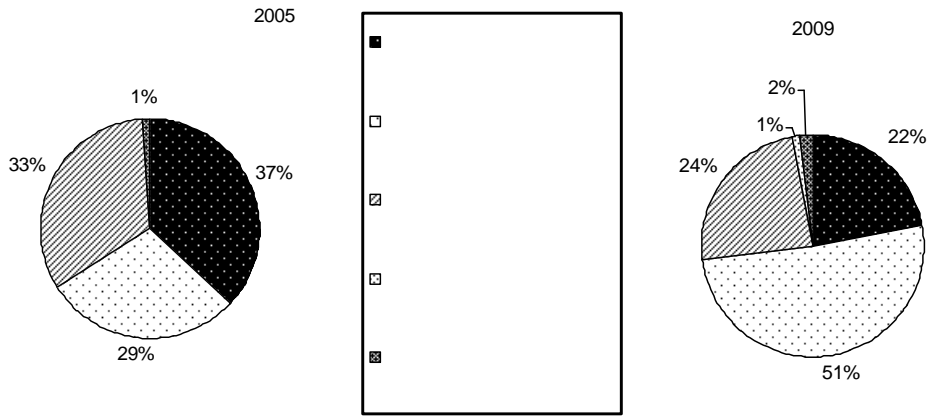


4. (1), (2) [4, 5].

(. 5). 2009 . 18. 14 , 2008 12 - 2005, 10 - , 2003. , 2009 . 17,1 . [5]. 2009 . 148 .

2009 . , 11 [7].

) 2009 . , 2008 23 %, (2005 . 30 % . 2007 . [6, 7]. 2004 ., 228 % 2009 .



.5.

. [4, 5].

• , , , : .
 • ;
 • ;
 • ;

1. / . . // . . , . . -
 . - , 2002. - 496 .
2. 2009 . - , 2010. - 34
3. / . . . : , 1974. - 90 .
4. 2004 . , 2005.
5. 2009 . , 2010.
6. 2005 . , 2006. - 340 .
7. 2009 . , 2010. - 340 .
8. : www.lvivstat.gov.ua
9. : www.lvivlis.com.ua

17.09.2011
 20.10.2011

**TENDENCIES AND PROSPECTS OF DEVELOPMENT OF FORESTRY
IN LVIV REGION**

V. Dupelich

*Ivan Franko National University of Lviv,
Doroshenko St., 41, UA – 79000 Lviv, Ukraine*

General description of the forests is given according the categories, the dynamics of production of goods of forestry volumes, dynamics of areas of deck-houses and areas of renewal, and also dynamics of areas of development of illnesses and wreckers of the forest, areas of defence of the forest, is reflected from illnesses and wreckers. Investment and external economic activity of forestry of Lviv Region is analysed. Main recommendations on the improvement of situation in forestry of the Lviv Region are given.

Key words: forest complex, forestry, basic forest breed.