

910.2:551.4+551.8 (477)

()

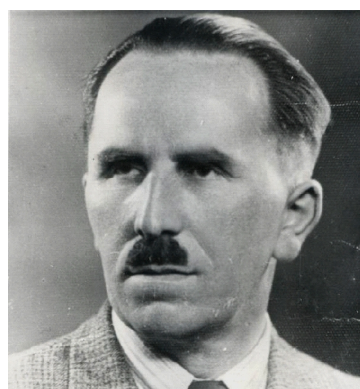
, 41, 79000, ,
e-mail: prostolena.87@mail.ru

()

().

1920 1939

[42, 44–47]



()



, 1912

1914

[1, 2].

[40, 41].

1914
1927

[25, . 32].



(12.10.1928–09.09.1930) [1, . 120–125; 22].
 : “ ”
 (12 1928). “ -
 , ” (17
 1928). “ _____ , _____
 (1 1/2)
 in extenso¹, ” (31 1929). “ [] , ?”
 (4 1929). “ „² ” (9 1930).



1927 . , -
 [20]. , “ -
 (1927–1947) -
 : . -
 , -
 ” [49, . 5].
 1927 . , -
 , 29 1929 . – (-
) [39, . 11].
 6 , 1935 . “ ” [39, . 12].

¹ n extenso (.) –
² “ ”



(1932).

[64].

[49].

” (1937) “

(1938) [7].

. 27–64].

[29, 30].

[29,



[7].

[57].

6205),

[42].



4 1924 .(

[5],

1922 .

” [5].

9 1925 .) [42].

9 1925 .: “

(. – . .)

[34].

... (9 1925). “ ... – 2 ...

(“ ... ”)– ... – ...

... , ... , ...

(...)... – ...

... , ... , ...

... , ... , ...

... ”. ...

... – ... “ ... ” – ...

“ ... ” [36, .2]. ... 24

1926 .. , ... [42].

... “ ... ” [41]. “ ...

... – ... 1939 , ...

... ”, – ... [41, .1]. [42].

1928 .. , ... [42].

... “ ... ”, ...

.20 : ... – ...

1929 . “ ... ”. ... [36, .1].

“ ”

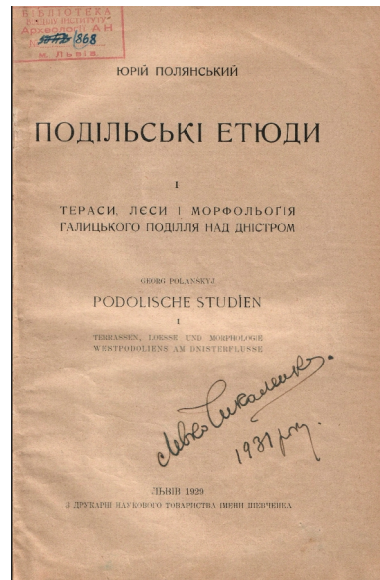
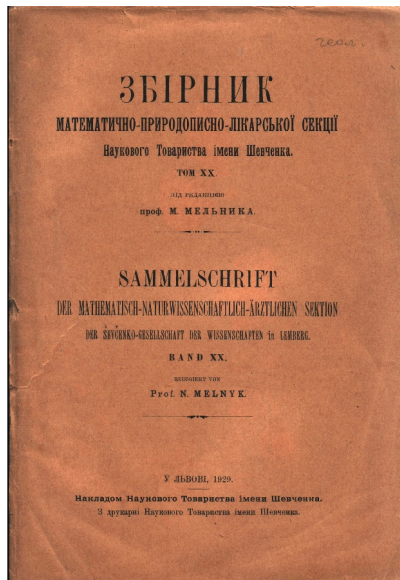
1930 ..

[42]

28 1929 . : “ “ ” ,

“ ”

316 . . 1930 . . .”



“ ”

(1939)

“Paleolit”, (!)

()

[55].

” [55, . 2].

1939 .

[42].

[38].

“

(. . .) ,

?”

[42].



1920-

1928 .

[42]. “

(. . .) ,

(. . .) ,

(. . .) ,

(. . .) ” [26, . 11].

“

” [27].

() (-

-) -

[28].



bada paleolitycznych lessowych w Gródku na Wołyniu”).

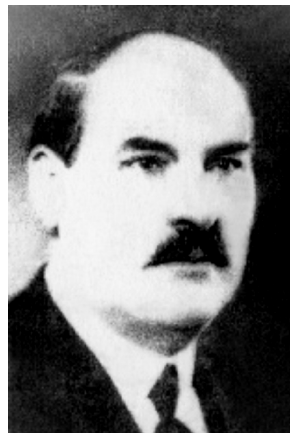
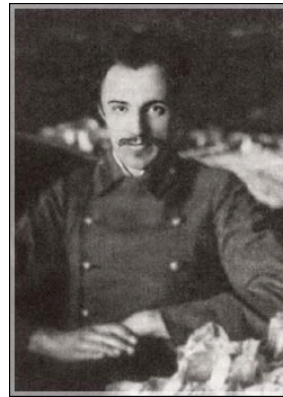
[42].

„... 17 ... 1927 ...

“...”, (...) ... [42],

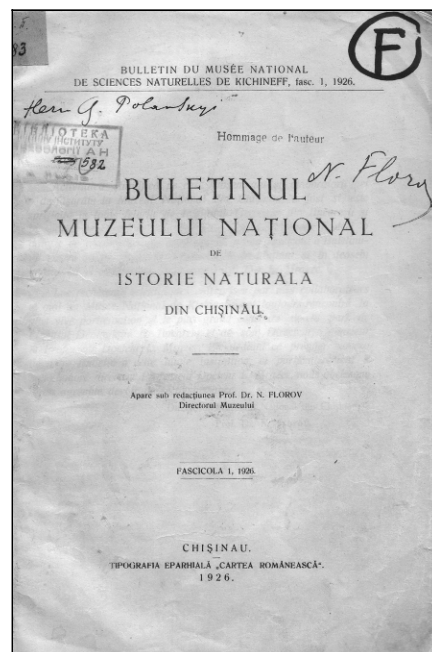
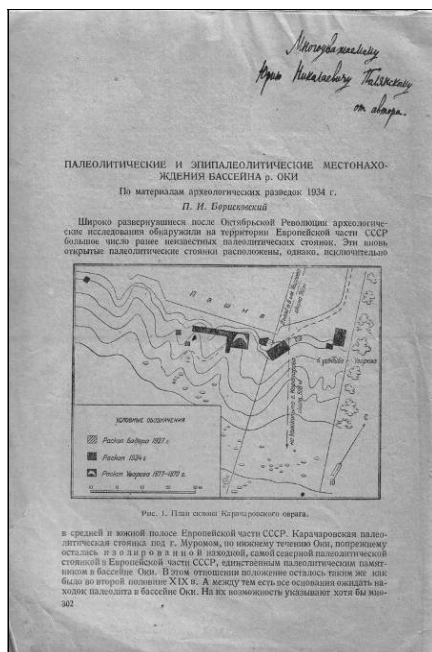
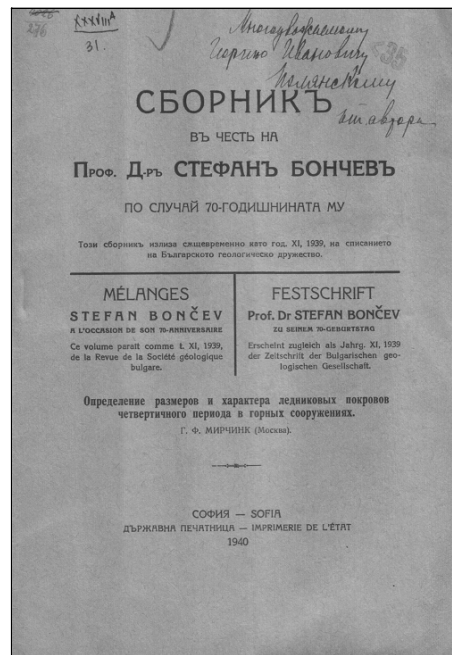
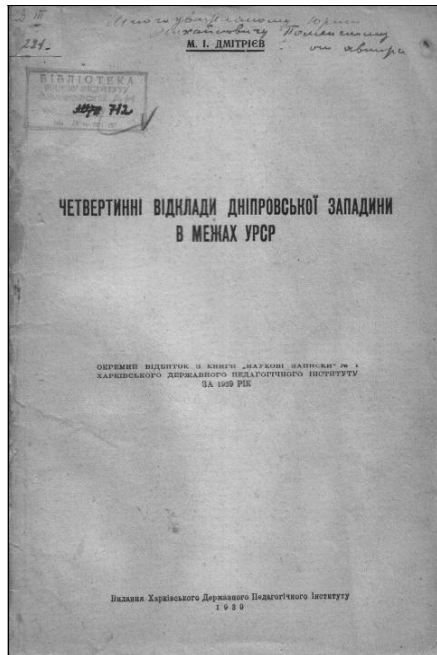
... [56].

[58].



1930– 1940-

... [8–10];



[23, 24];
6

[3],

[51]

[14–17; 21, . 442].

[16]



”, 1929)

(“



[32].

[14].

6

[4]

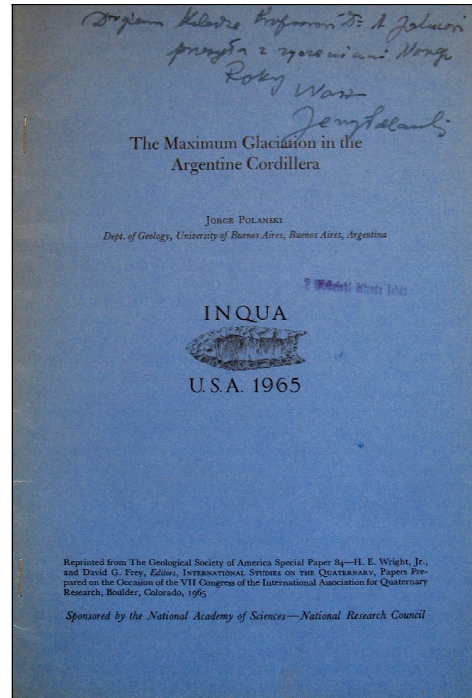
“ ” “ ” [17, . 31].

[6]

V -6 1927 1929 . [60].

b

” [6, . 164].



7

1956 .

(Miembro Honorario de la Asociacion Geologica Argentina),
(Miembro Correspondiente de la Soc. Geol. de Mendoza).

1964 .

“Premio Dr. A. Mibashan en Homenaje del Sesquicentenario de la Revolucion de Mayo”
[50, .193].



[62].

1964 .” [48, .305].

1. / [.]. – , 1994. – 136 . :
2. , 2007. – 408 . / [.]. – :
3. // INQUA. – 1934. – . 1. – . 302–317.
4. , 1940. – 128 . / – .:
5. // . – 1925. – .
6. V -6 V -6 (- : -) / - , 1933. – 226 .
7.] . – : . 1 : / [.] . – : , 1938. – 512 .
8. / / “ ” 1940 [.] . – 1940. – 18. – 7 .
9. / “ ” 1939 [.] . – 1939. – 1. – . 229–263.
10. / “ ” 1937 [.] . – 1937. – 10. – 10 .
11.] . – ; , 1955–1984. : 10 / [.] . – ; 1921/22 – 1930/31. 1931/32 // - 1921–1931. – , 1932. – 101 .
13. () / / , - // : , . – 2001. – . 8. – . 105–117.
14. // – 1934. – . 2. – 8. – . 500–506.
15. / // – 1926. – . 4. – . 214–264.
16. // // , 1927. – . 9. – . 5. – . 1–325.
17. // - , 1930. – . 1–2. – 10. – . 27–35.

18. “ ” /
 / [] /
 - 1941. - . 5. - . . 4. - 59 .
19. / [.]. - -
 : , 2000. - . 2. - 1024 .
20. / / [.] - : , 2010. - . 339-344.
21. :
 (.) / ,
 - : , 2009. - 536 .
22. / [. ” ;
] // - 2006. - . 19. - 435 .
23. -
 // - 1940. - . 33. - 10. - . 1-7.
24.
 / //
 70- :
 , 1940. - . 241-246.
25. /
 : / [.] - , 1994. -
 . 29-42.
26. // - - 2006. - . 36. - . 11.
27. (, -
) / //
 , 1976. - . 7-12.
28. / //
 , 1998. - . 235. - . 636-637.
29. / /
 : . 1 : [.] - :
 - , 1938. - . 27-64.
30. / /
 / [.] [.] - , 1943. - . 33-77.
31. -
 () /
 // - 1925. - . 1. - . 3-24.
32.
 / //
 - 1932. - . 4-5. - . 1-8.
33. /
 // - 1932. - . 4-5. -
 . 1-19.
34. / // -
 - 1925. - . 23-24. - . 1-2.
35. / //
 - 1927. - . 2. - . 1-14.

54. Jahn A. Z Kleparowa w wiat szeroki / A. Jahn. – Wrocław : Zakład Narodowy im. Ossolińskich, 1991. – 332 s.
55. Krukowski S. Paleolit / S. Krukowski // Encyklopedia Polska PAU. Prehistoria ziem polskich. – Kraków, 1939–1948. – T. 4. – Cz. 1. – Dz. 5. – S. 1–117.
56. Polański J. Lessy warstwowe w świetle archeologicznych badań Ludwika Sawickiego / J. Polański // Nadbitka z Wiadomości Archeologicznych. – Warszawa, 1928. – T. 10. – S. 1–12.
57. Polanek G. Die erste Paläolithstation in Nowosilka-Kostiukowa (Podolien) / G. Polanek, S. Krukowski // – 1926. – . 25. – 23 . (Separatabdruck).
58. Sawicki L. O stratygrafii lessu w Polsce / L. Sawicki // Rocznik Polskiego Towarzystwa Geologicznego za r. 1932 [odbitka]. – Kraków, 1932. – T. 8. – Z. 2. – S. 331–332.
59. Zierhoffer A. Towarzystwo Geograficzne we Lwowie. Sprawozdanie za rok 1927/28 / . Zierhoffer / [odbitka]. – Lwów, 1928. – 8 s.
60. <http://hydrogeology.univer.kharkov.ua>
61. http://pl.wikipedia.org/wiki/Stani%C5%82aw_Kulczy%C5%9Bki
62. <http://www.facebook.com/jorge.polanski>
63. <http://www.uni.wroc.pl/o-nas/godnoci-honorowe/doktorzy-honoris-causa/stani%C5%82aw-kulczy%C5%9Bki>
64. <http://ntsh.org/files/uprava-i-chleny-1932-big.jpg>

: 01.08.2012
23.11.2012
05.12.2012

SCIENTIFIC CONTACTS OF PROFESSOR YURI POLIANSKI (based on epistolary heritage)

Olena Tomeniuk

*Ivan Franko National University of Lviv,
P. Doroshenko St., 41, UA – 79000 Lviv, Ukraine,
e-mail: prostolena.87@mail.ru*

Scientific cooperation of Ukrainian palaeogeographer, geomorphologist and archaeologist Yu. Polianski with scientists from related fields of natural sciences and humanities under materials of private correspondence was investigated. On the basis of the identified prints of publications with dedicatory signatures of Yu. Polianski for his colleagues and vice versa (for him) the range of scientific contacts of this researcher was widened. It is an addition to the understanding of the role and place of the scientist and the range of his interests in scientific community of that time.

Key words: scientific contacts, scientist, palaeogeography, geomorphology, geology, archaeology, Ukraine.

