

631.472/48 (477.83)

(),

,

,

3 ,

[4].

,

()

[3].

“ ”, 1995), “ ”, 1999), (“ ”, 2000), (“ ”, 2004), (“ ”, 2005)

“ ”,

“ ”,

()

‘ , ‘ , – -

“ ” . -

- . [8].

(. . 1). – 1 , 2 3 , – 14

“ ”

1 2,2 . -

- 100 .

- - 27 .

10 % 78 .

70 , 78 - .

;

(op)

0–19 (10YR5/2), , - , -

2–3 , , 10–12 ()

(/)

19–27 , (10YR4/2), , - , ,

7–10 , , ,

1–2 , , ,

;

h

27–49 - (10YR5/3), , ,

0,5–1,0 , (10YR8/2),

;

tk

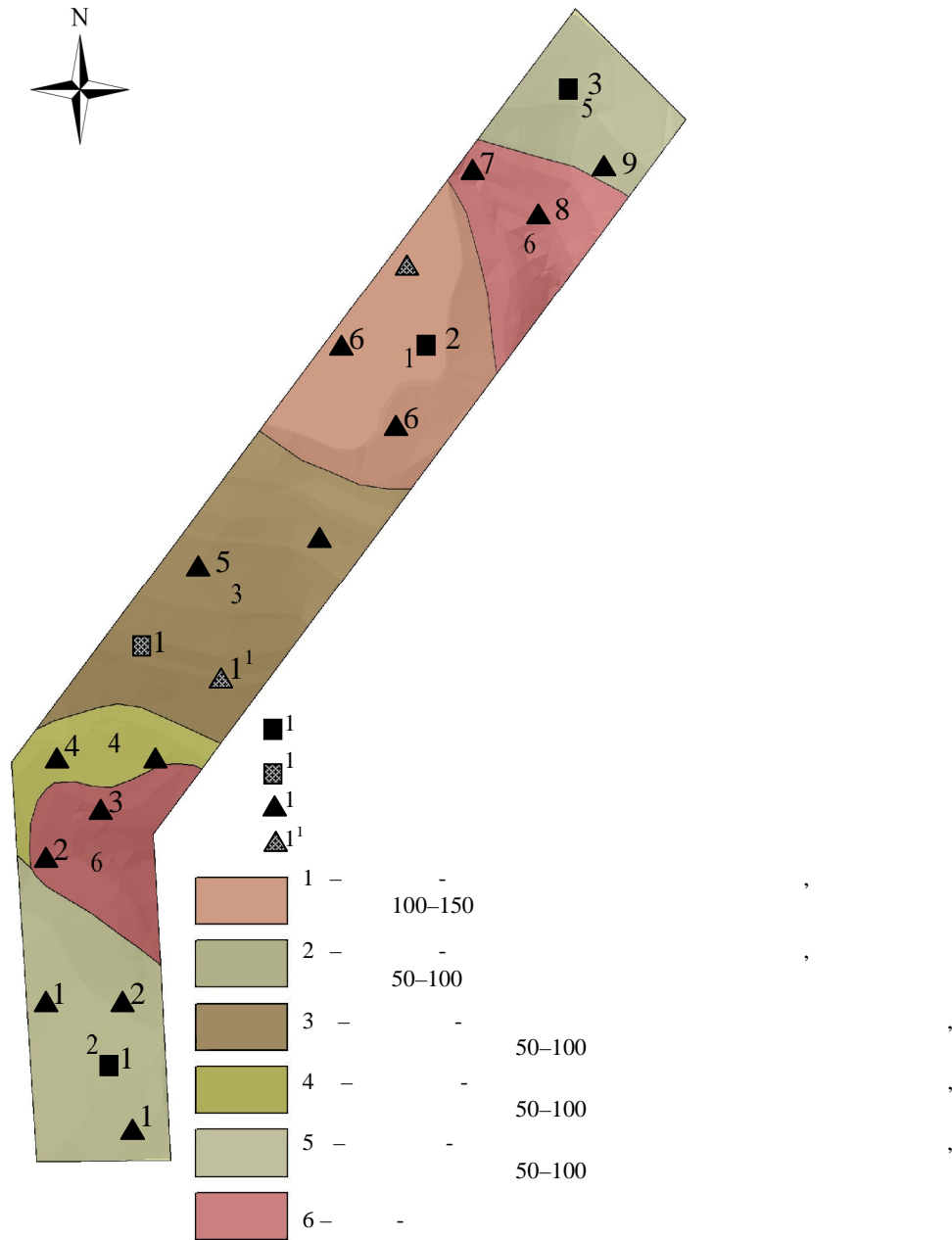
49–78 (10YR5/6) 5 % , (10YR7/2), ,

0,5–1,0 , , 70 10 % ,

20 , ;

D

78–100 (10YR7/2), .



. 1.

“ ”.

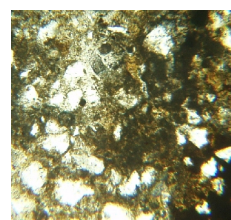
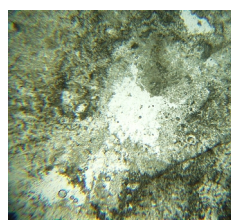
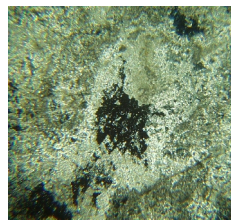
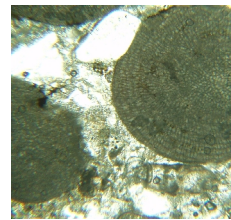
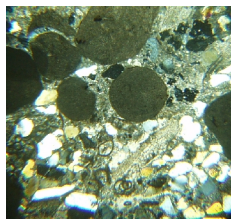
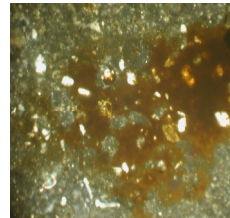
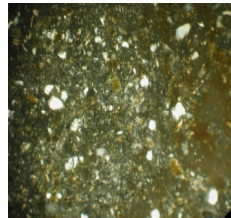
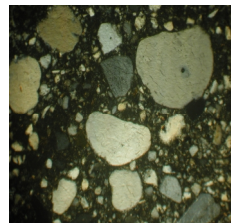
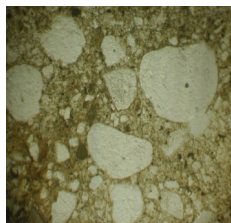
	2	600	1	-
	- 95	73	- 29	-
	:			-
(op)	-			(10YR5/2)
0-19		10-12		2-3
(/)	-			
19-29			(10YR4/2),	
		1-2	7-10	
h	(10YR8/2),			
29-43	(10YR5/3),			
	0,5-1,0			
(gl)t	(10YR8/2),			
43-73	(10YR6/6),		(10YR5/4)	
			0,5-1,0	
		(10YR8/2),		
		10-30		
D		(10YR6/2),		
73-95				
	3	200	2	
	- 125			
	-	83	- 25	
:	-			-
(op)	-			(10YR5/2)
0-25				
	1 3		(5-7)	
			()	

()
 25–40 , (10YR6/3), , - ,
 - , , 7–10 ;
 , 1–2 , ;
 ()
 40–57 (10YR5/6), , -
 , 0,5–1,0 , , ;
 , , - ,
 57–73 (10YR5/4), , - , ;
 , ;
 gl
 73–83 (10YR6/4) , (10YR6/6), -
 , 10–20 ,
 , ;
 Dgl
 83–125 : (10YR5/6) , (10YR6/6),
 , - , 2 .
 -
 ,
 [4, 5].
 .
 (- , - 1 2) -
 .
 ,
 I .I , 55–65 (Iptk
 1), , 0,01–0,03 .
 , -
 , 0,2
 0,75 , (2 %) 0,5 . -
 0,3–0,45 .
 15–20 % , - 20 % .
 2 .I (.2, ,) 31–41
 (Ieh 2). -
) . (45–50 %) (, -
 0,01–0,05 (20 %)

(25–30 %).

(50–55 %)

– 0,07 0,9 , 0,22–0,37
 40–45 %, – 10 %,



2.

– 2 .I, .48, ; – 2 .I, .48, ;
 – 3 .I, .48, ; – 3 .I, .48, ;
 , .48, ; – I .2, .63, ; – 2 .2, .16, ; – I .2, .16, ;
 – 2 .2, .16, ; – 3 .2, .63, .

(43–47 %),
 , , , ,
 (3 %), (2 %),
 (2–3 %), 0,07–0,15
 3 .1 (. .2, ,) 73–83
 3 . – , ,
 , , , , – 50 %.
 15–20 % .
 (13–18 %) 0,01
 0,1 , (2 %) 0,07–0,1 .
 () (. .2,).
 , , 10–20 .
 , , , ,
 1 .1, 2 .1 3 .1
 () – (. .2, ,)
 ,), 15 47 %, , ,
 , , , , “ . ”
 , , , ,
 1 .2 (. .2, ,) 1 –
 , , (. .2, ,)
 , 2 . ,
 , , , , 50 %
 2 .2 (. .2, ,) 2 .

... , 50 % .
... , 0,4–0,7 , .
3 3 .2 (. .2,) – .
... , , 0,2–0,9
... , .1. –
... , [4].
1 . , 50 .
... , 50–100 , –
(10YR6/6) , –
... , (.1).
... () ,
... “ ” ,
... – – ,
... , – ,
... ,

[4].
 ,
 ,
 (- -) .
 ;
 ,

СПИСОК ВИКОРИСТАНОЇ ЛІТЕРАТУРИ

1. . . . / , : - , 1964. – 222 .
2. . . . / : - , 1963. – . 7. – 64 .
3. . . . // , : 14–15 , 2010 . ; , 2010. – . 168–174.
4. [. . .] / , : , 2010. – 246 .
5. . . . // – 2005. – . 11. – . 63–67.
6. / , [. . .] – ; : , 1951. – 320 .
7. . . . // – 1999. – . 25. – . 40–42.
8. *Buraczynski J.* Regiony geomorfologiczne Roztocza / *J. Buraczynski, R. Hnatiuk, J. Zinko* // “ : ”: : , 1997. – . 91–95.

:

11.04.2013
 14.05.2013
 17.06.2013

**MORPHOLOGICAL STRUCTURE AND MICROMORPHOLOGICAL FEATURES
OF SOD-PODZOLIC SOILS OF SOIL MAKING AND UNDERLYING ROCKS
OF ROZTOCHCHYA**

Oksana Pidkova

*Taras Shevchenko National University of Kyiv,
Acad. Glushkova Ave., 2a, UA – 03022, Kyiv, Ukraine*

The morphological structure of low sod-podzolic and middle sod-podzolic soils of Roztochchya is analyzed as an example of key area of Potelych. Defined and analyzed micro morphological features of their soil making and underlying rocks. It is found out that sod-podzolic soils were formed on the same type water-ice loamy sands, which are underlain by calcite, sandstone and moraine. The soils cover of key area due to lithological differences is analyzed.

Key words: sod-podzolic soils, soils making and underlying rocks, morphological structure, micro-morphological features.